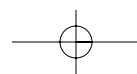
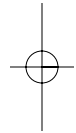


Lippincott Williams & Wilkins
atlas of
ANATOMY

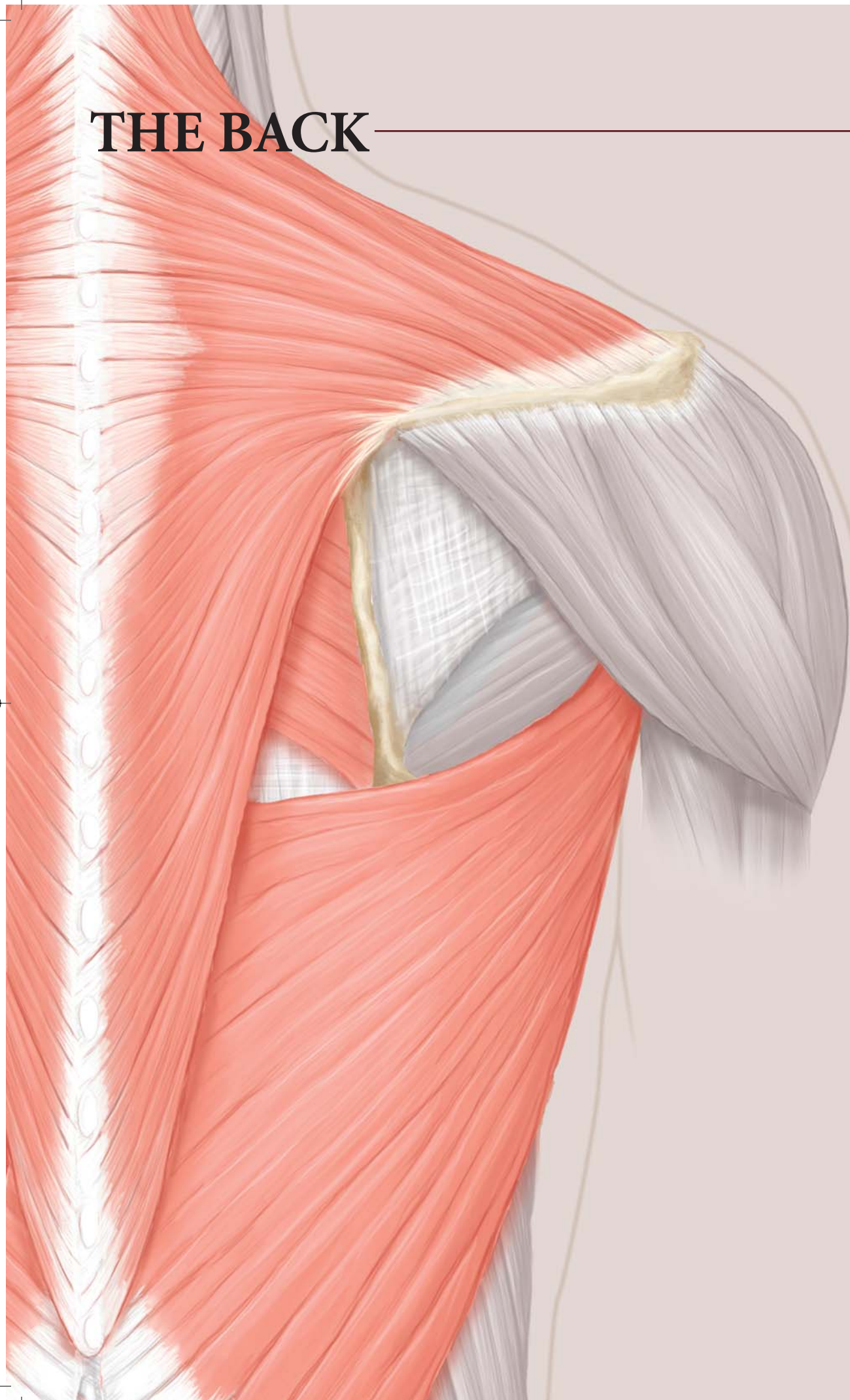
Latin Edition

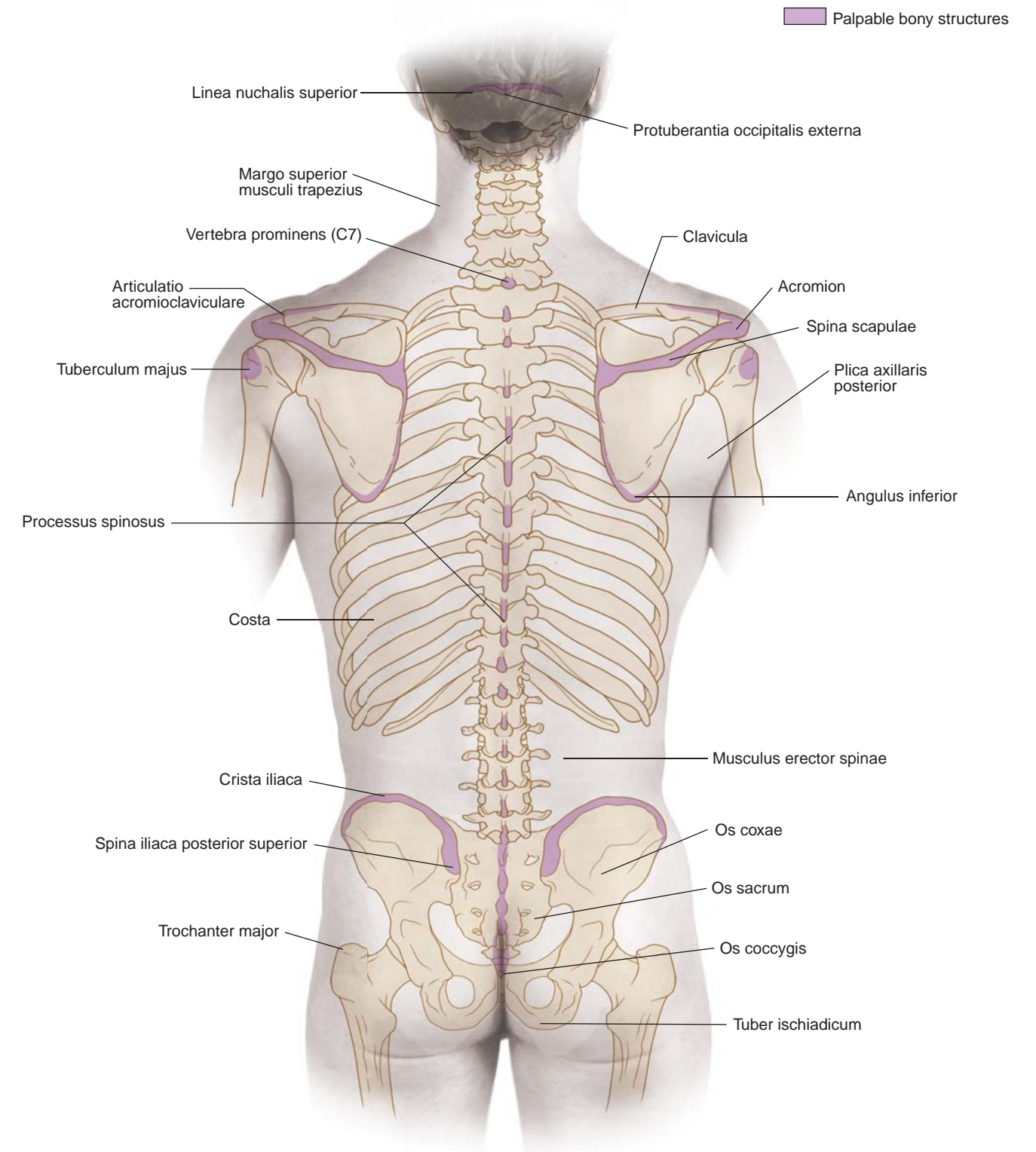


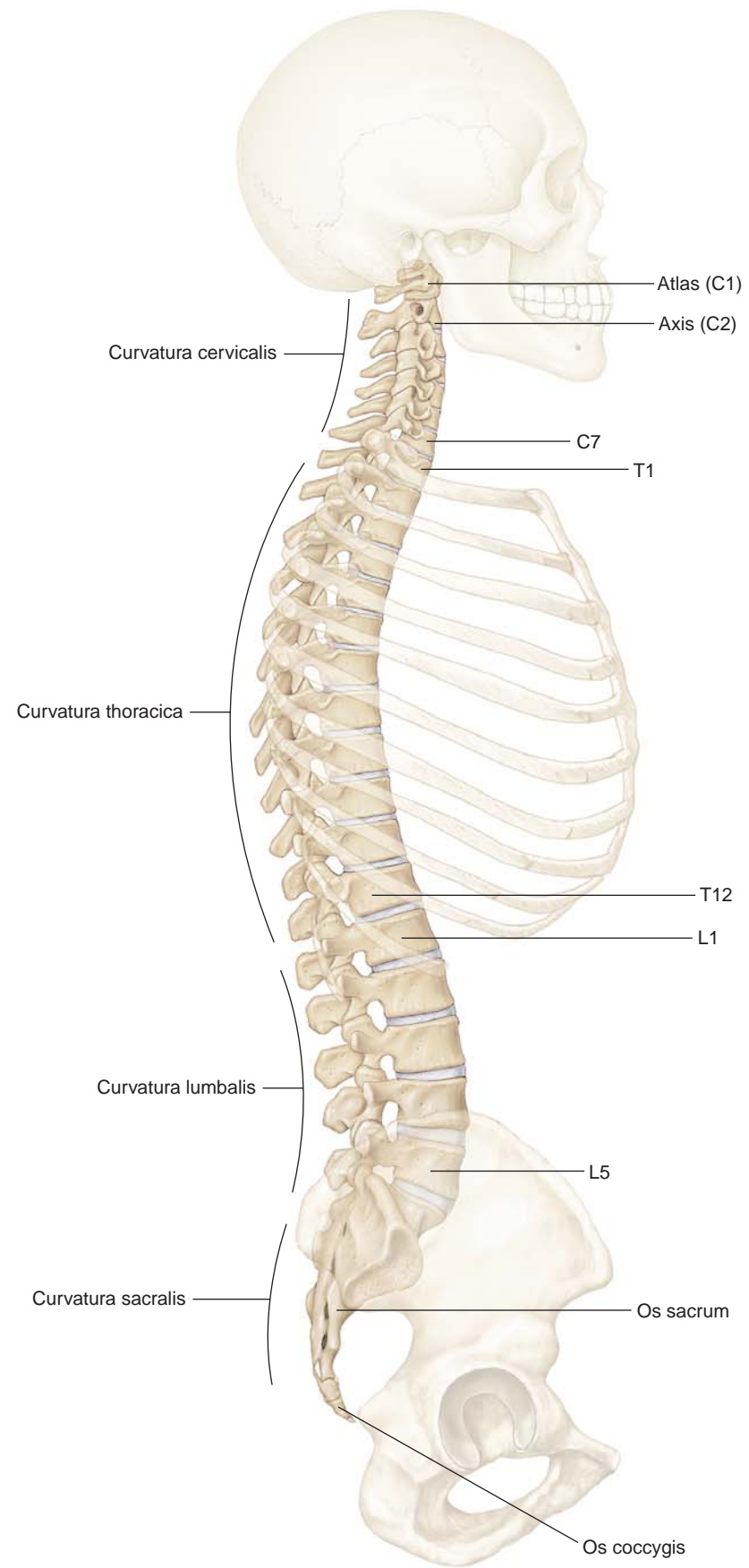
THE BACK

Lippincott Williams & Wilkins
 atlas of
ANATOMY
CHAPTER I

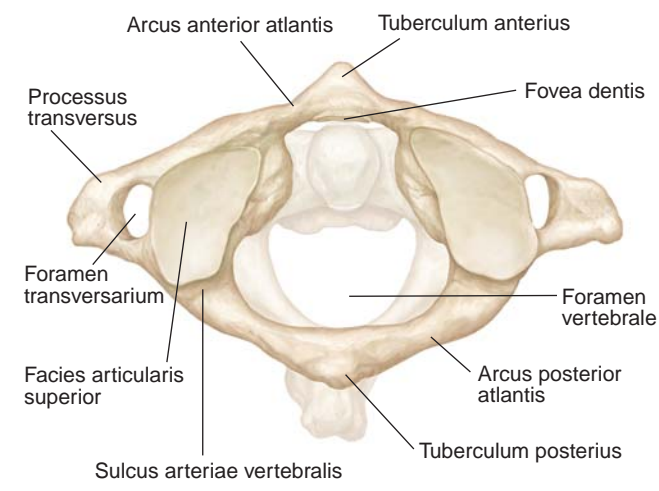
Plate I-01	Palpable Features of the Back	5
Plate I-02	Vertebral Column, Lateral View	6
Plate I-03	Cervical Vertebrae	7
Plate I-04	Articulated Cervical Vertebrae	8
Plate I-05	Thoracic and Lumbar Vertebrae	9
Plate I-06	Articulated Thoracic Vertebrae	10
Plate I-07	Articulated Lumbar Vertebrae	11
Plate I-08	Sacrum and Coccyx	12
Plate I-09	Ligaments of the Cervical Vertebrae	13
Plate I-10	Ligaments of the Thoracic Vertebrae	14
Plate I-11	Ligaments of the Lumbar Vertebrae and Sacrum	15
Plate I-12	Cutaneous Innervation of the Back	16
Plate I-13	Superficial Muscles of the Back	17
Plate I-14	Deep Back Muscles, Superficial Dissection	18
Plate I-15	Deep Back Muscles, Deeper Dissection	19
Plate I-16	Suboccipital Region	20
Plate I-17	Pattern of a Typical Spinal Nerve	21
Plate I-18	Spinal Cord, Posterior View	22
Plate I-19	Superior Portion of the Spinal Cord	23
Plate I-20	Inferior Portion of the Spinal Cord	24
Plate I-21	Blood Supply of the Spinal Cord, Anterior View	25
Plate I-22	Venous Drainage of the Vertebral Column and Spinal Cord	26
Plate I-23	Dermatomes	27



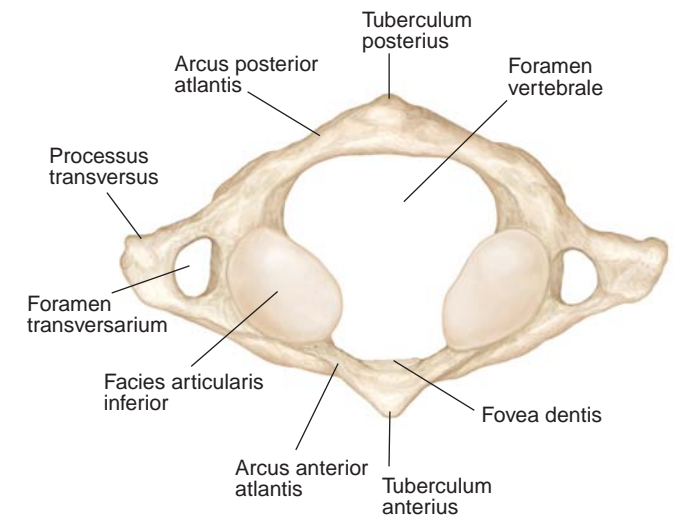




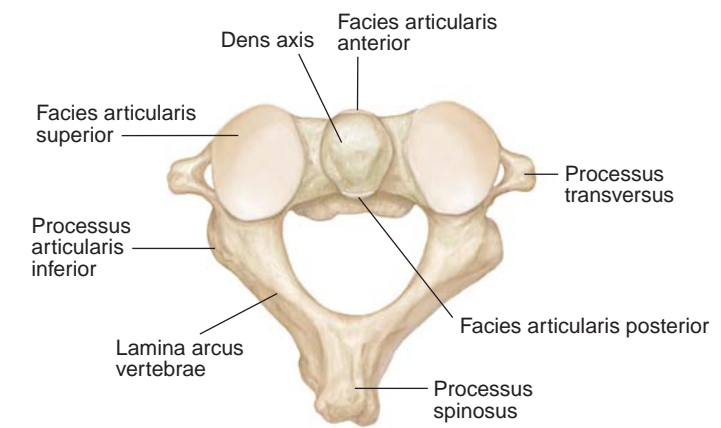
A. Atlas (C1), superior view



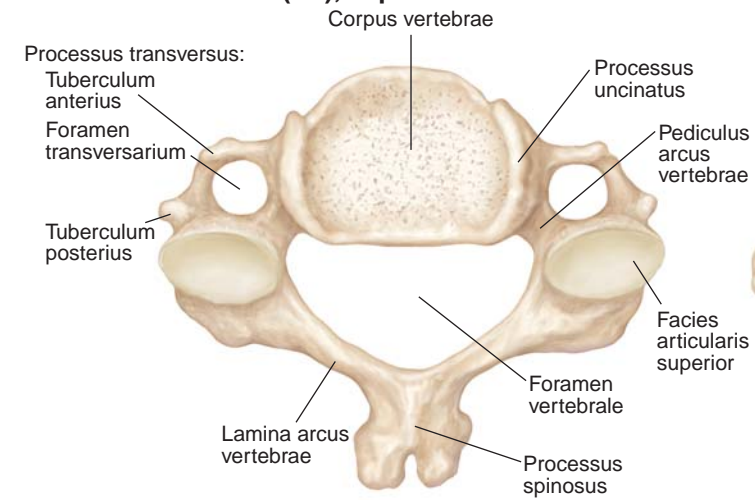
B. Atlas (C1), inferior view



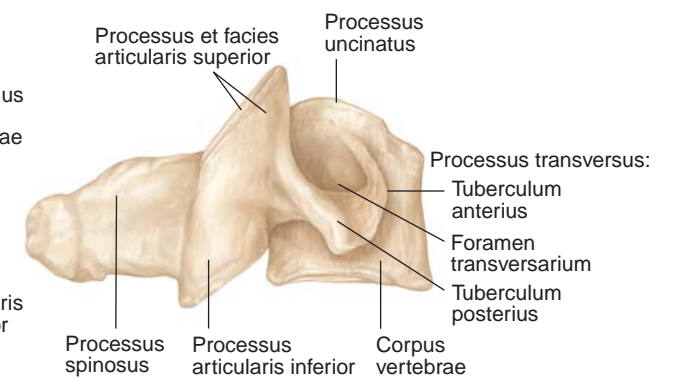
C. Axis (C2), superior view



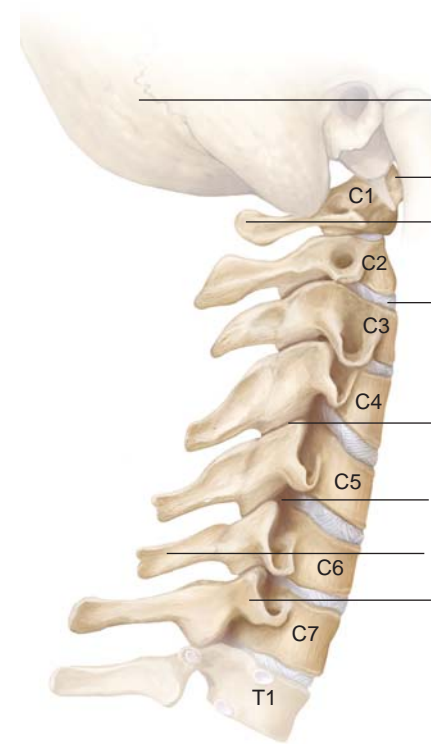
D. Cervical vertebra (C4), superior view



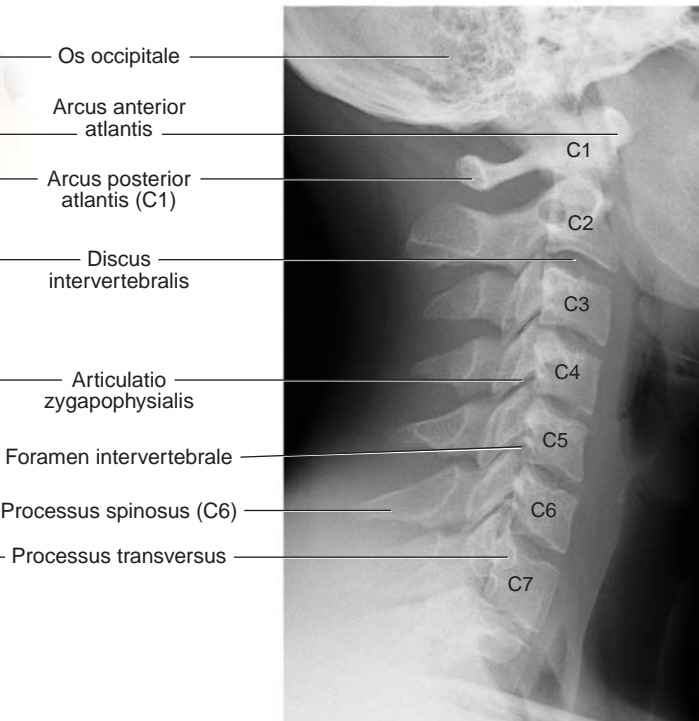
E. Cervical vertebra (C4), lateral view



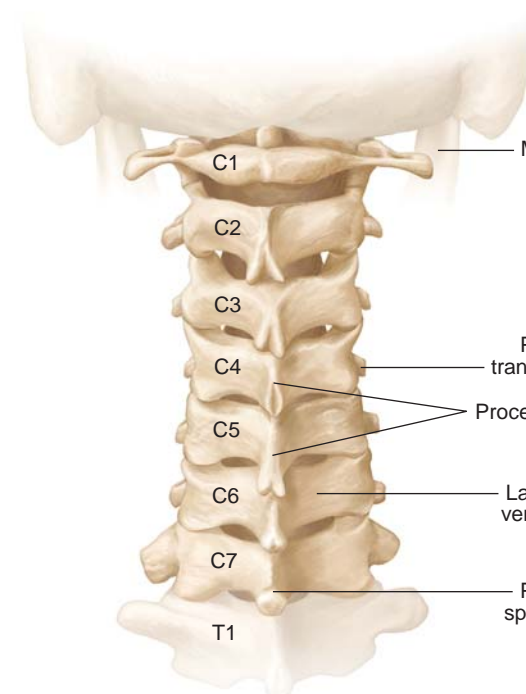
A. Lateral view



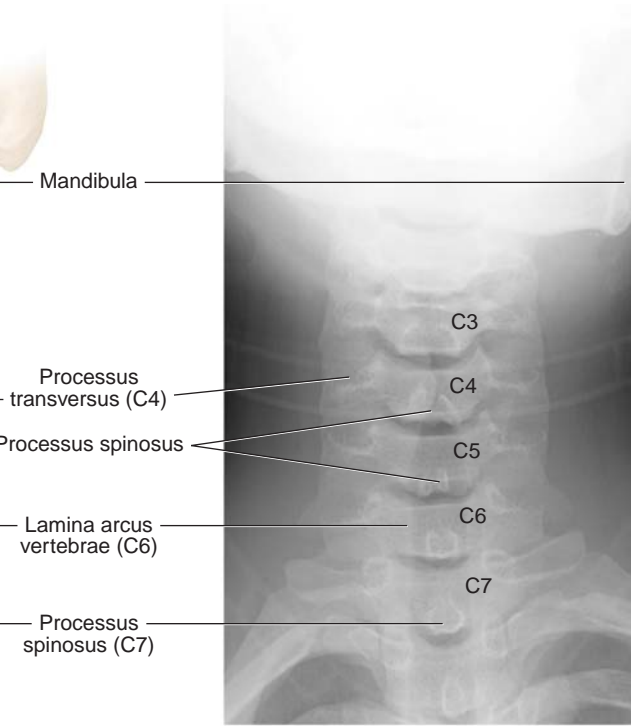
B. Radiograph of cervical vertebrae, lateral view



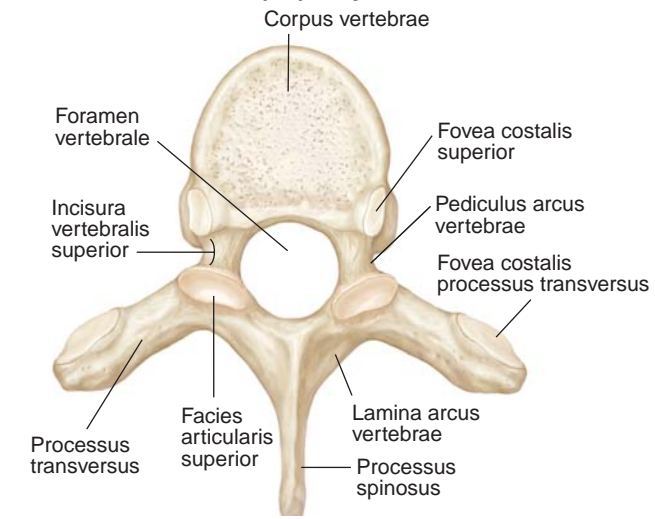
C. Posterior view



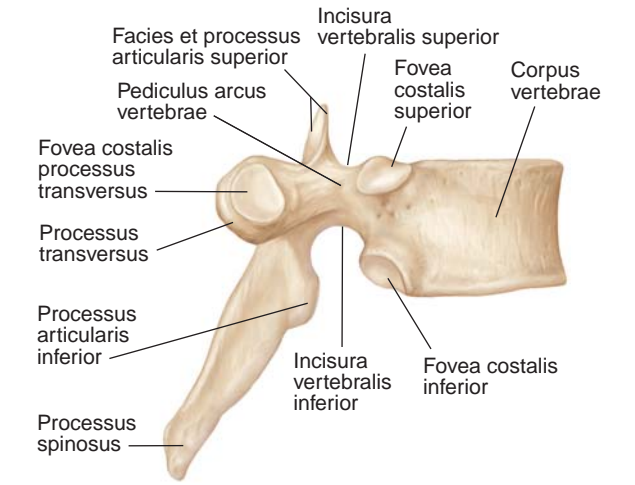
D. Radiograph of cervical vertebrae, posterior view



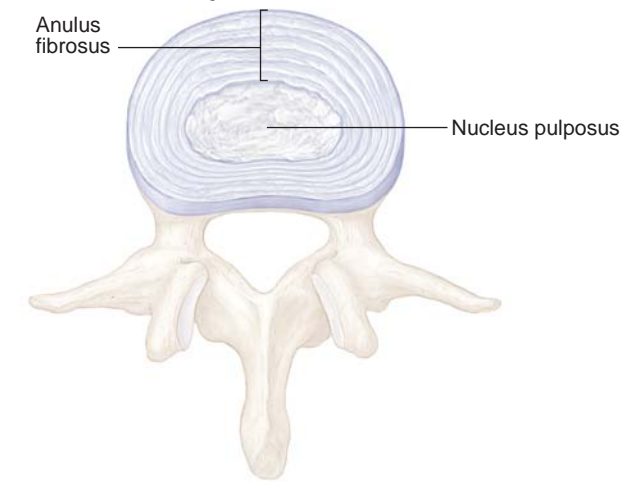
A. Thoracic vertebra (T6), superior view



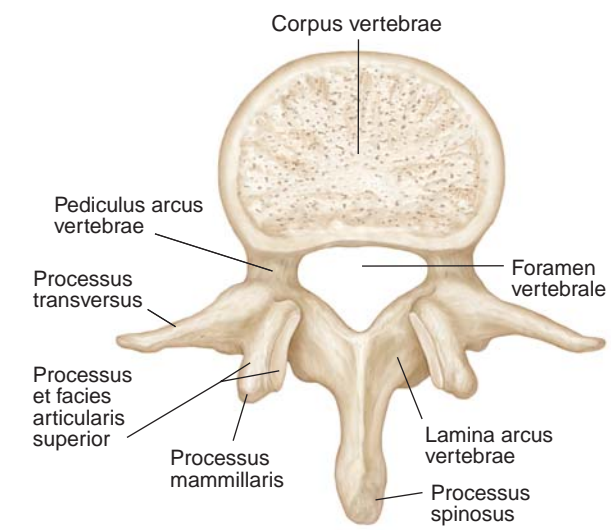
B. Thoracic vertebra (T6), lateral view



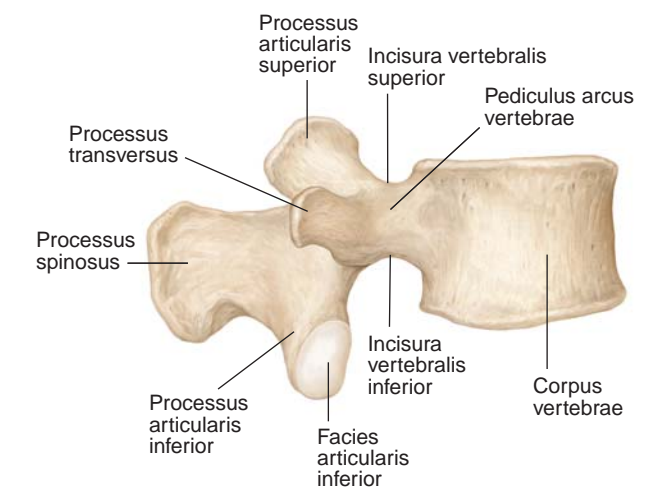
C. Intervertebral disc, superior view

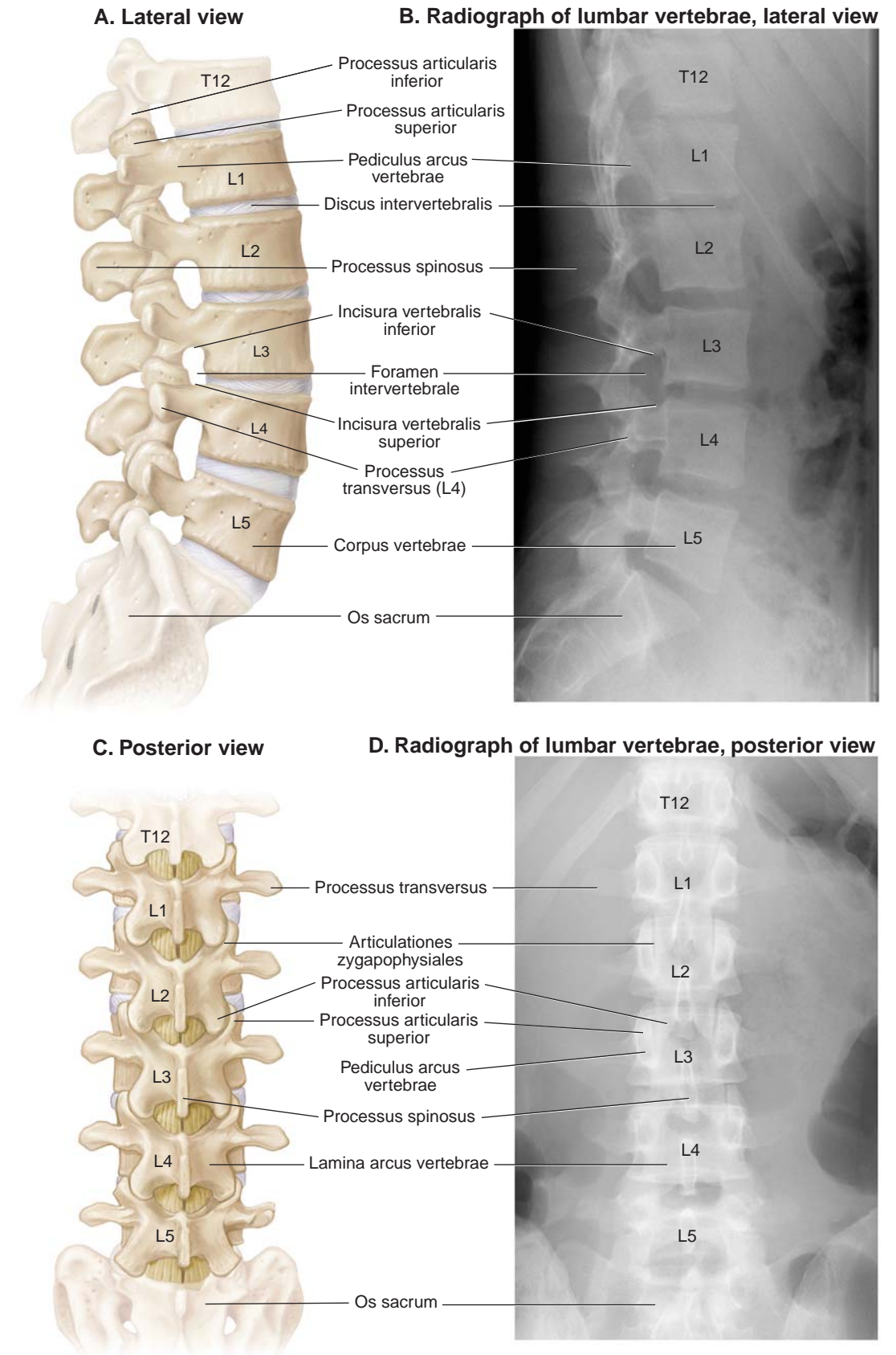
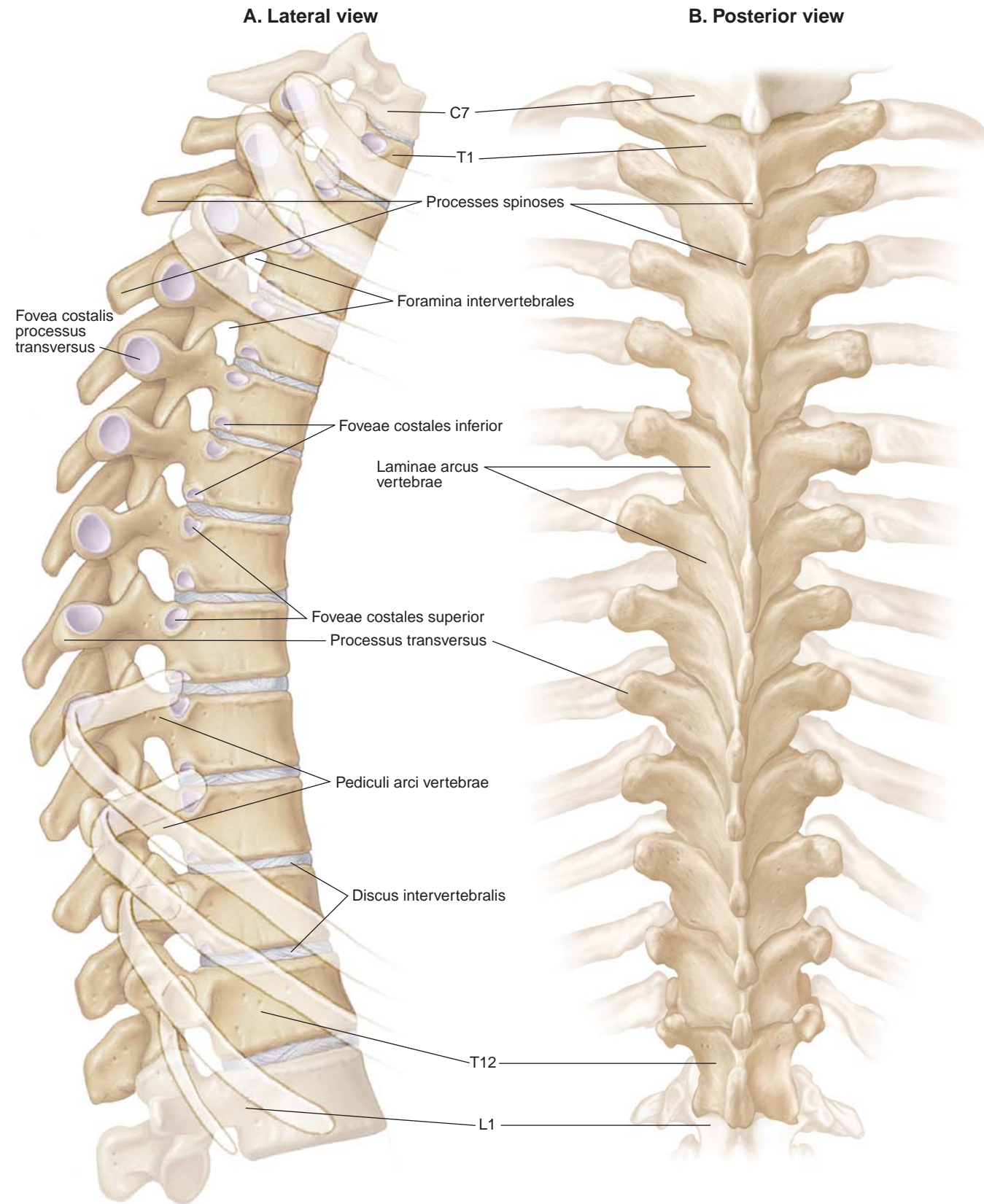


D. Lumbar vertebra (L3), superior view

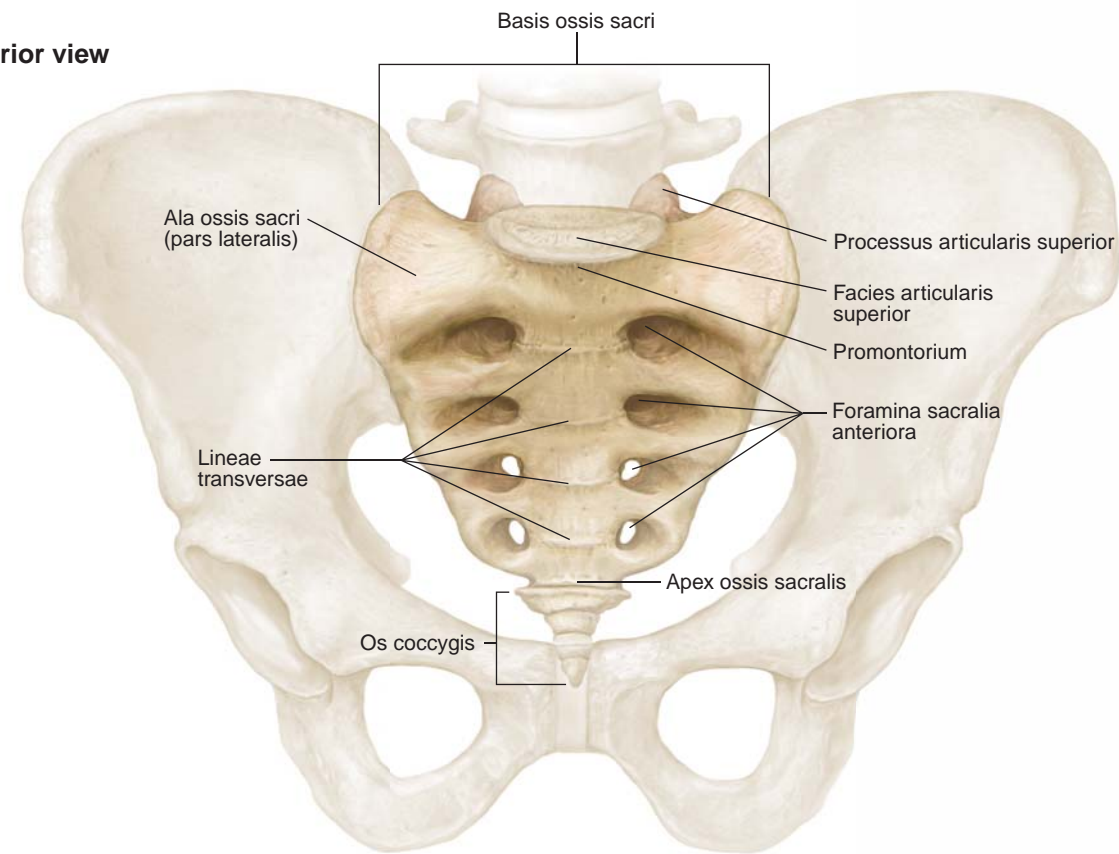


E. Lumbar vertebra (L3), lateral view

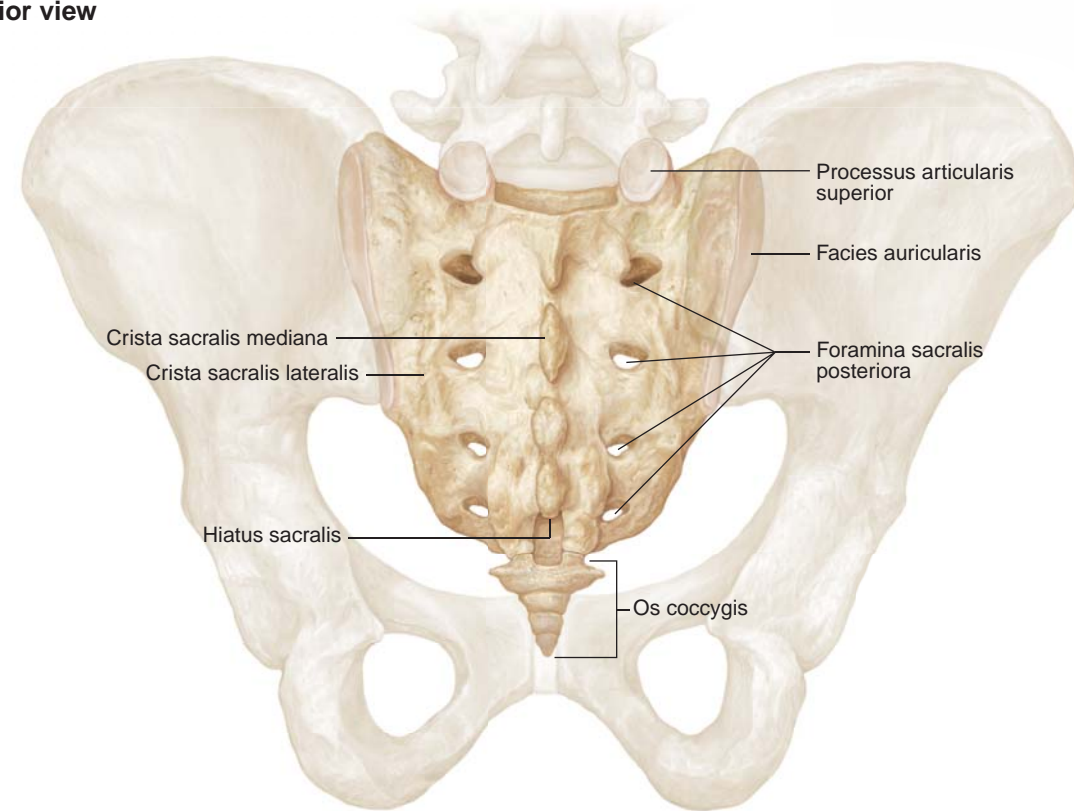




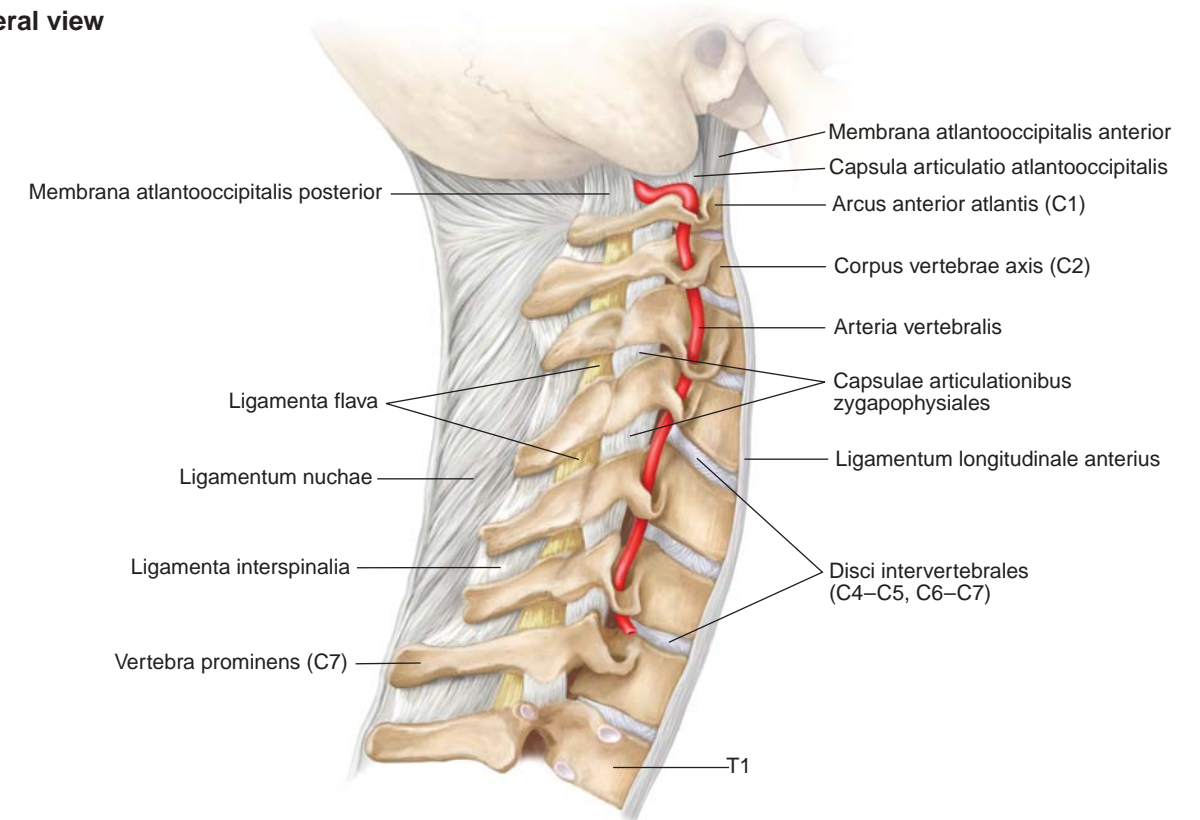
A. Anterior view



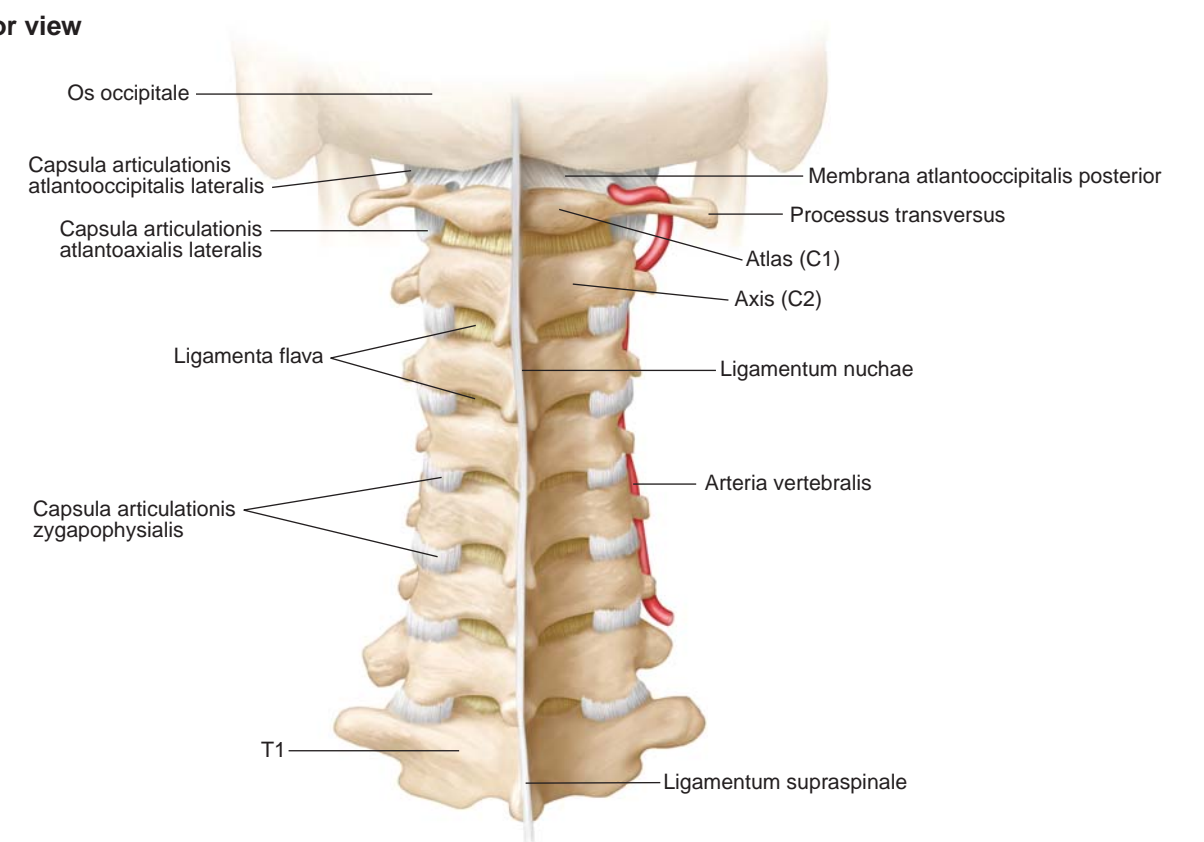
B. Posterior view

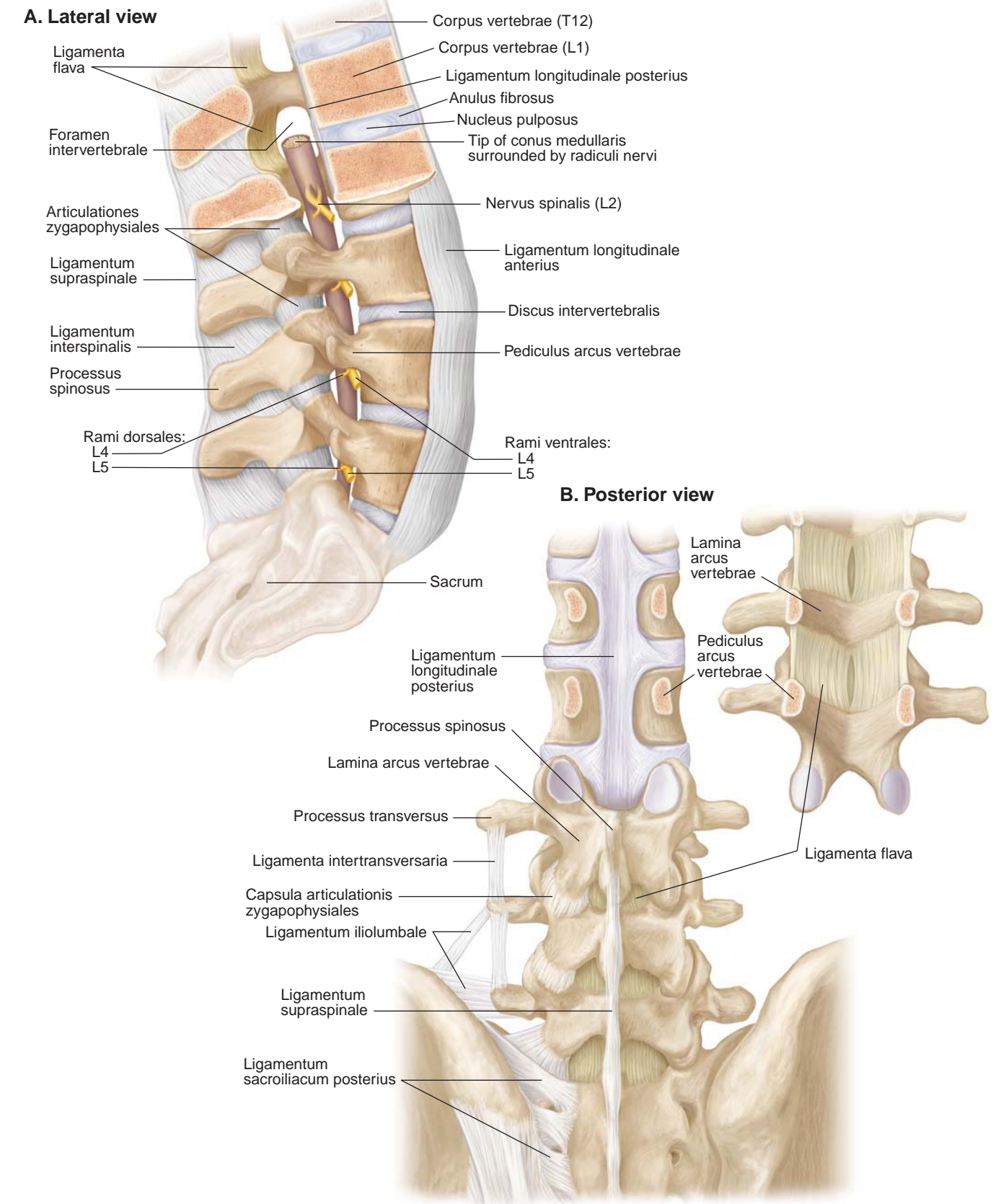
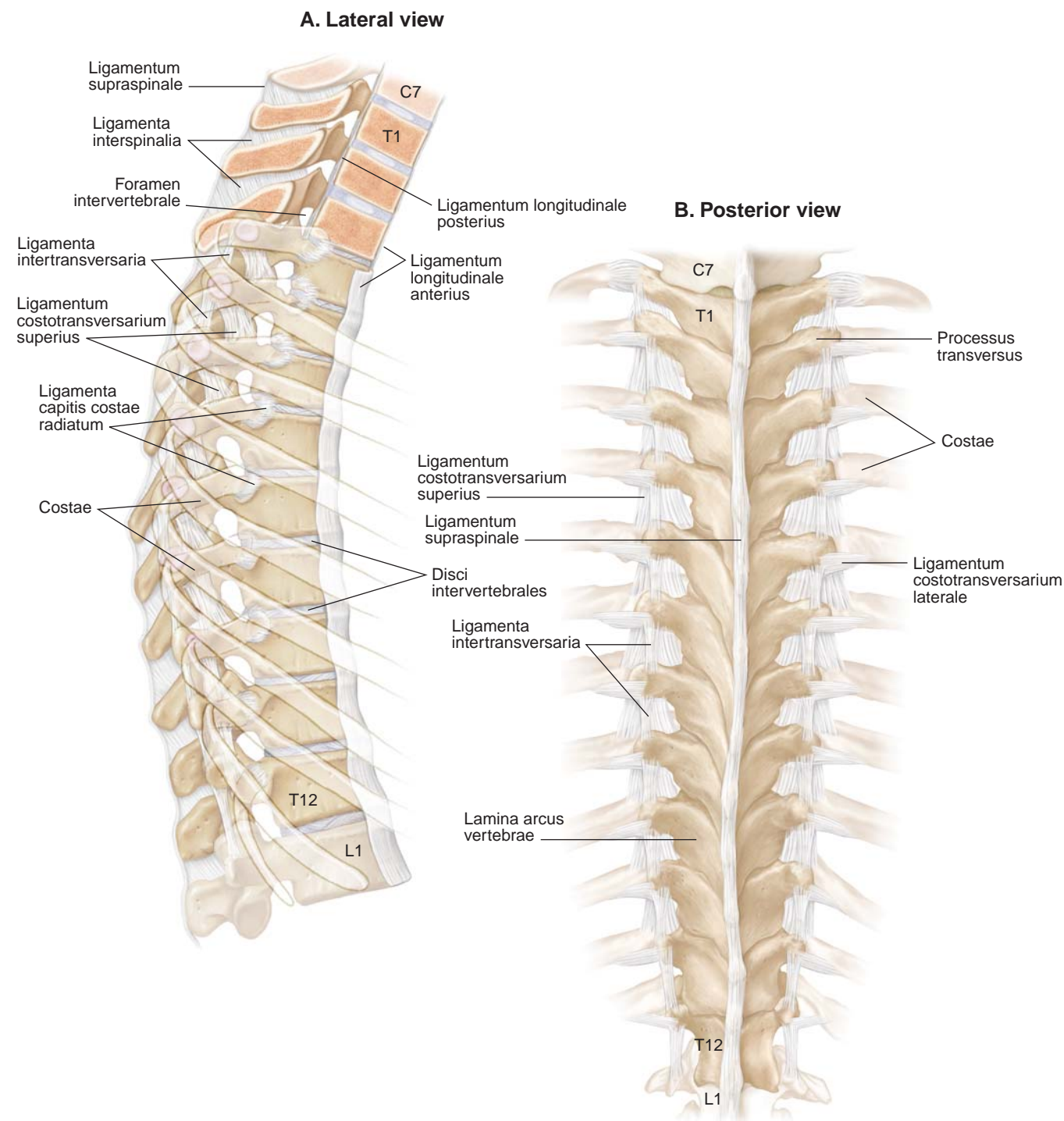


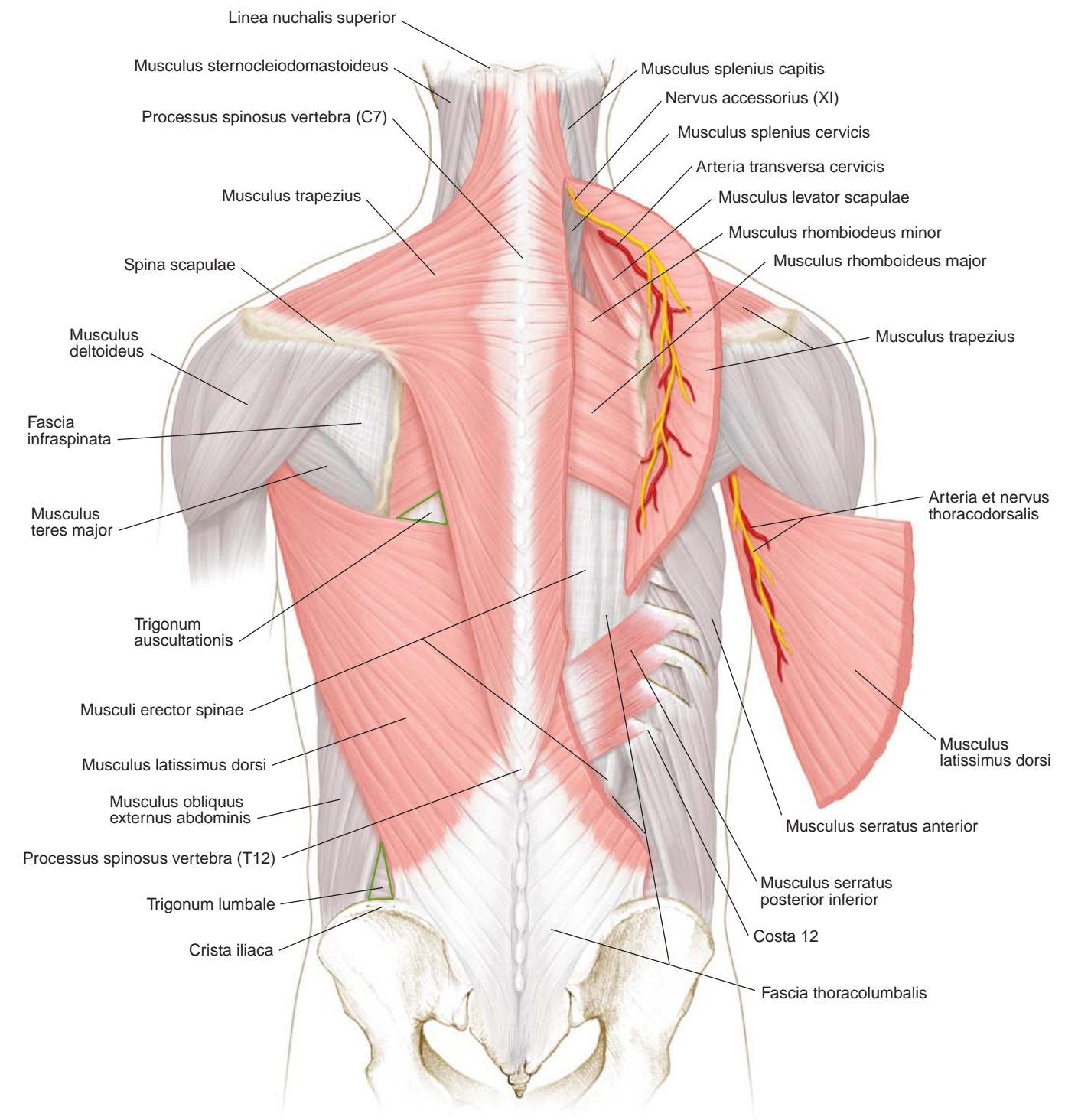
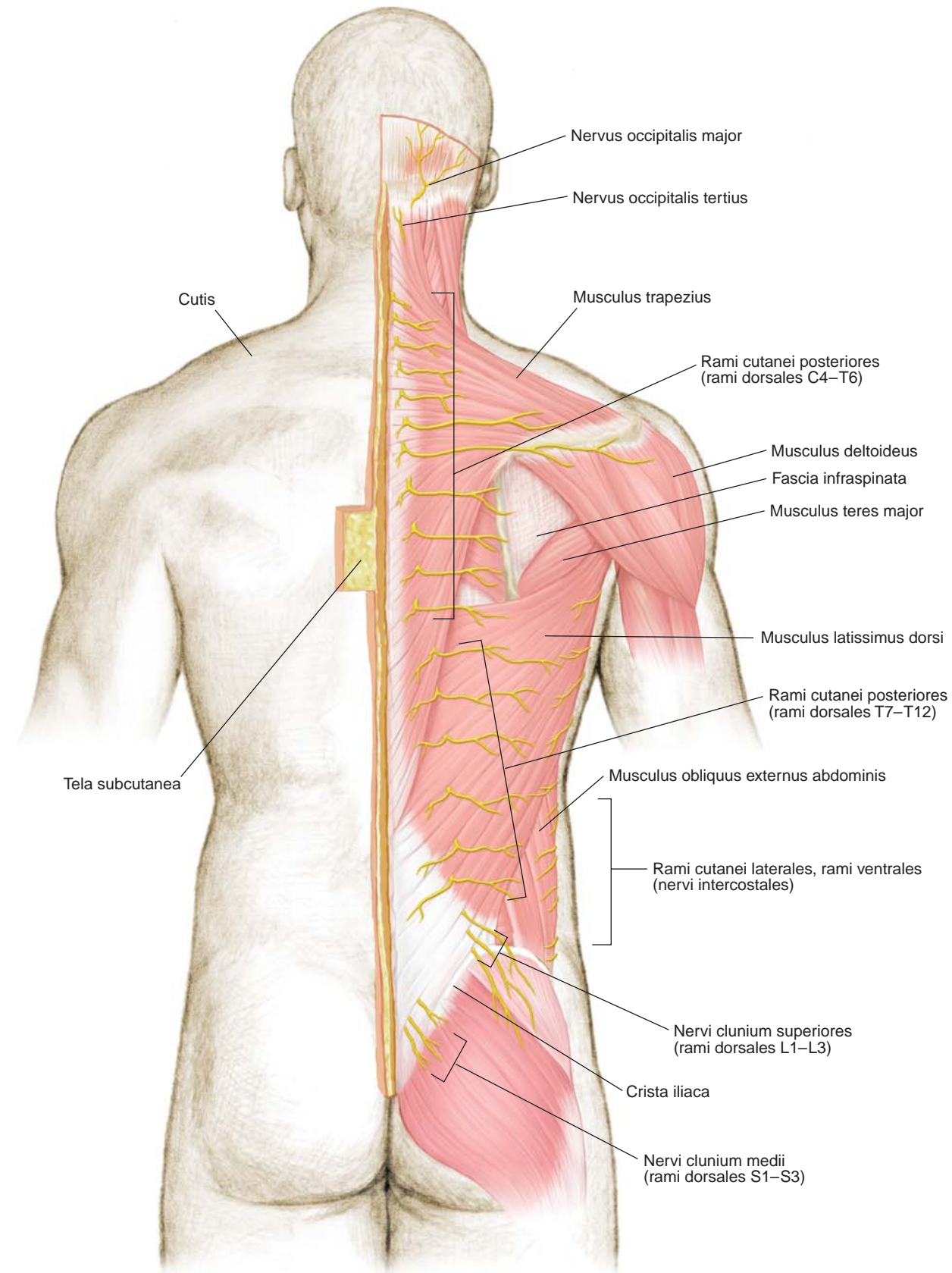
A. Lateral view

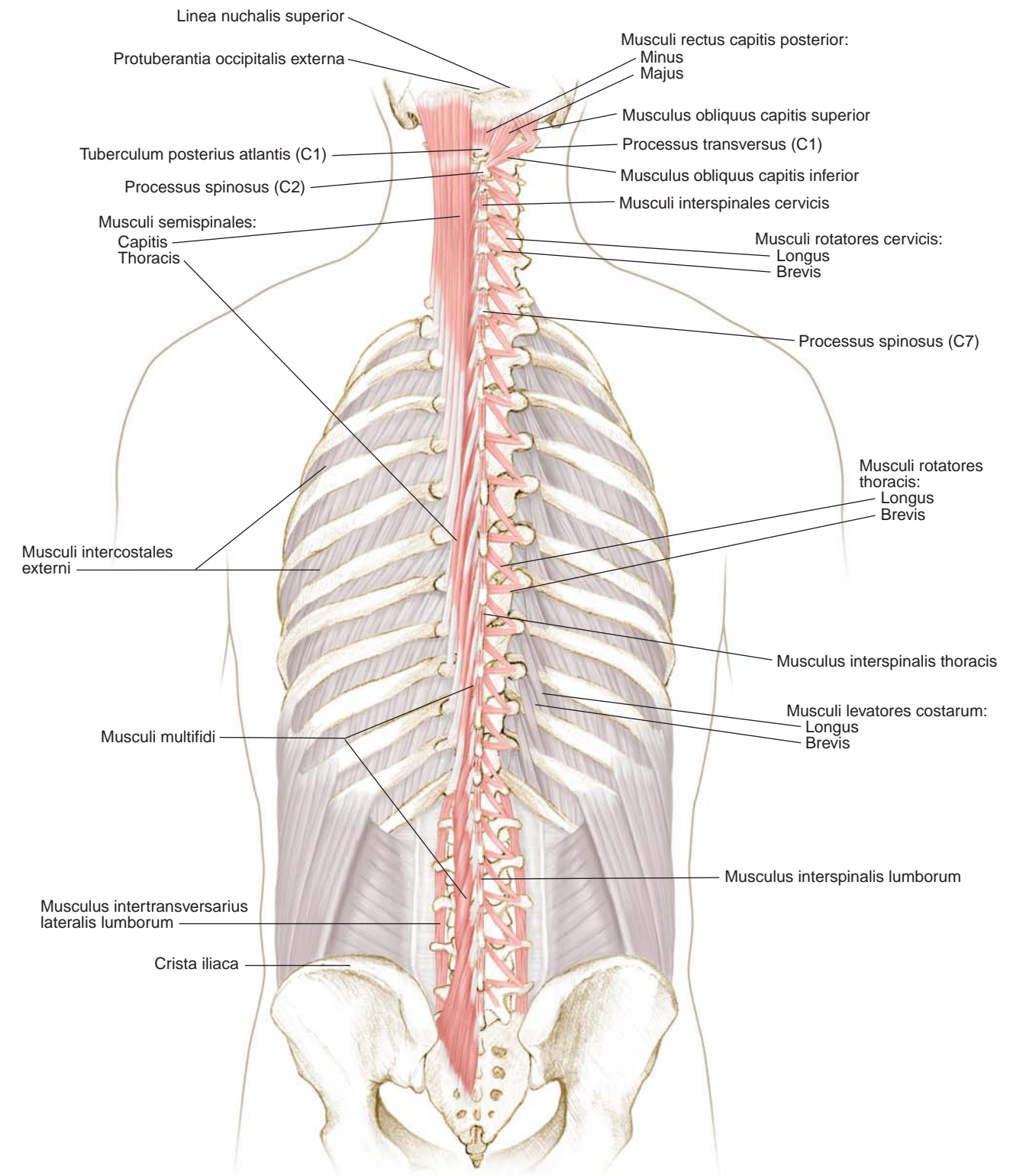
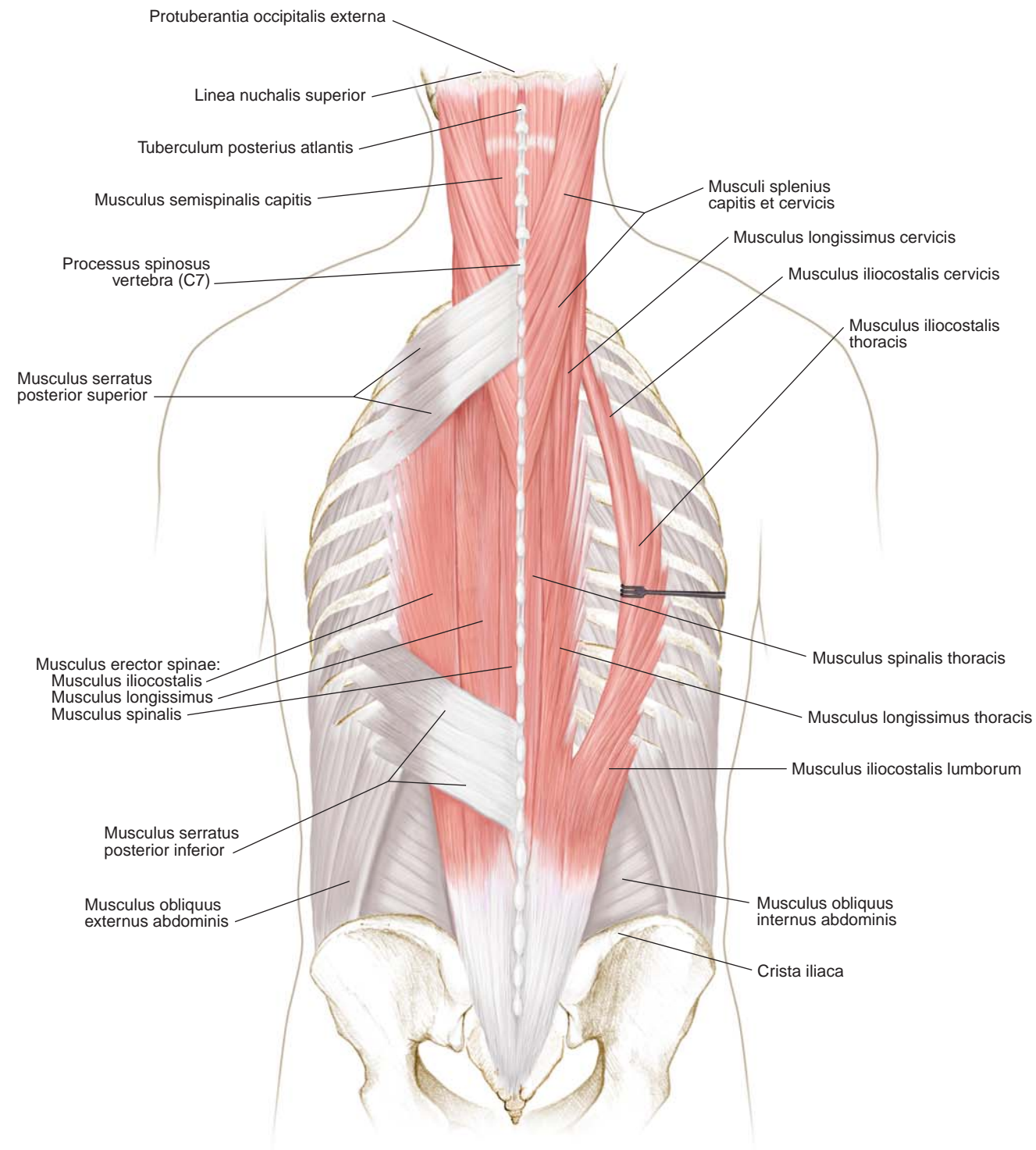


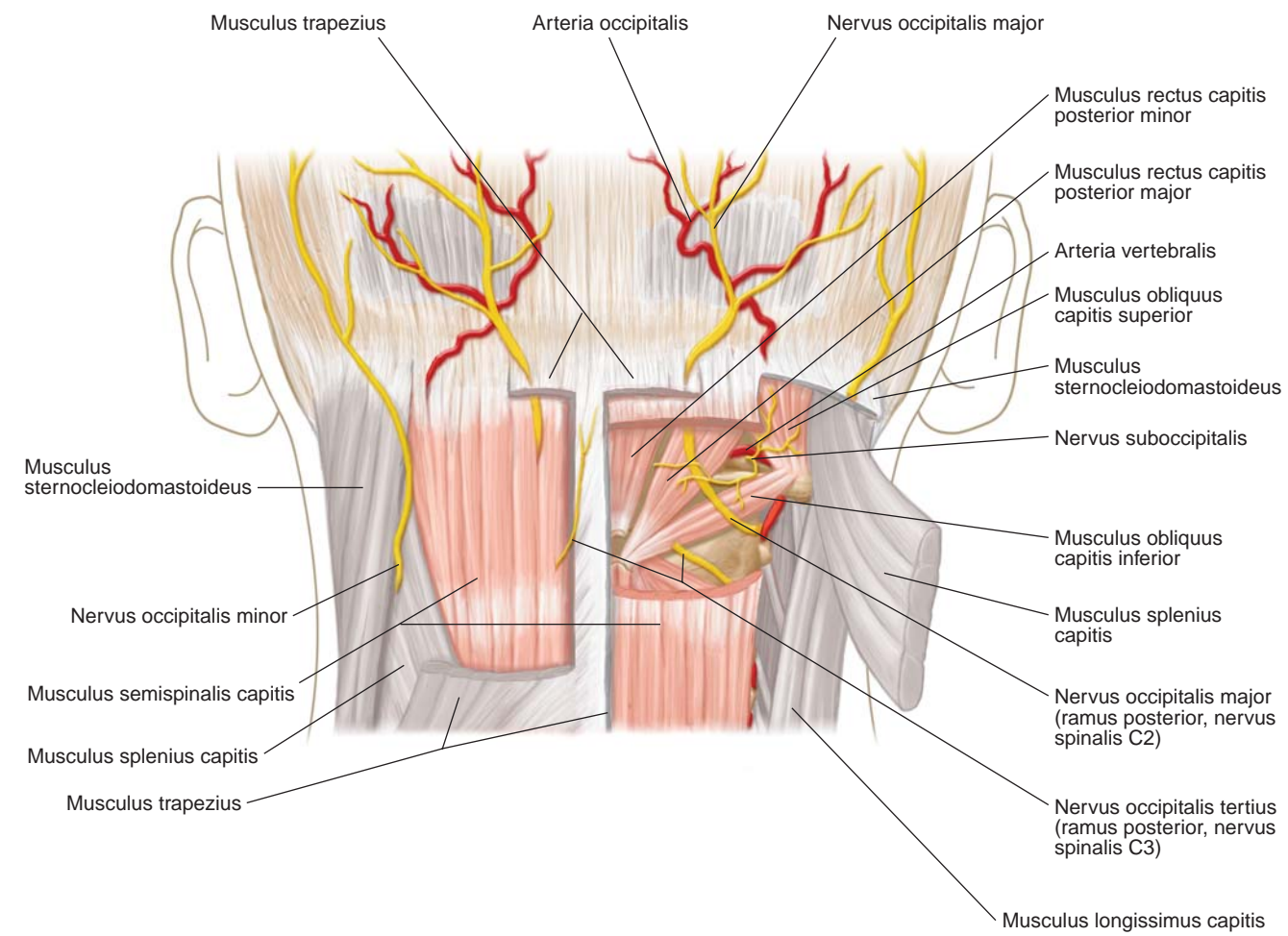
B. Posterior view







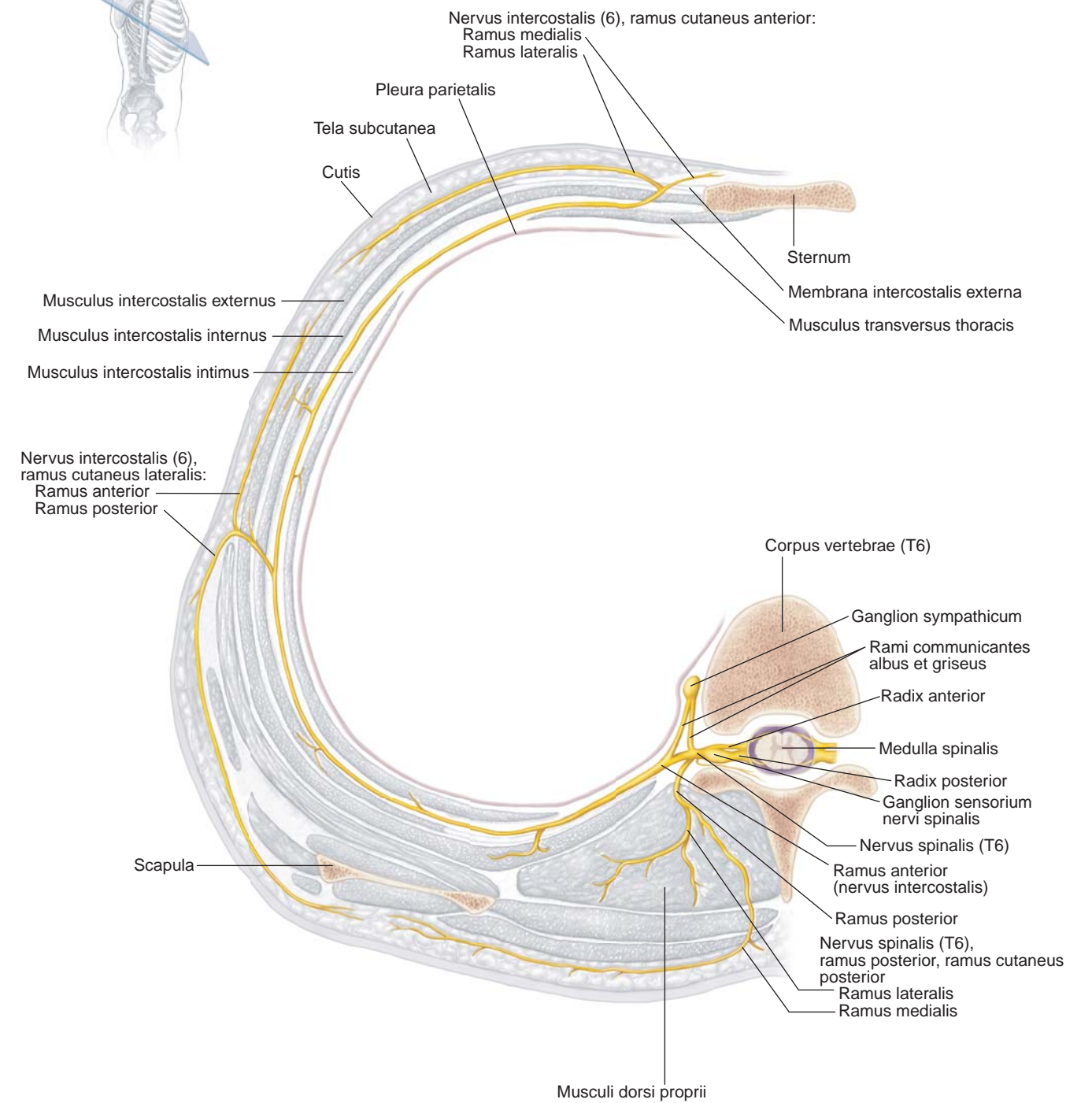


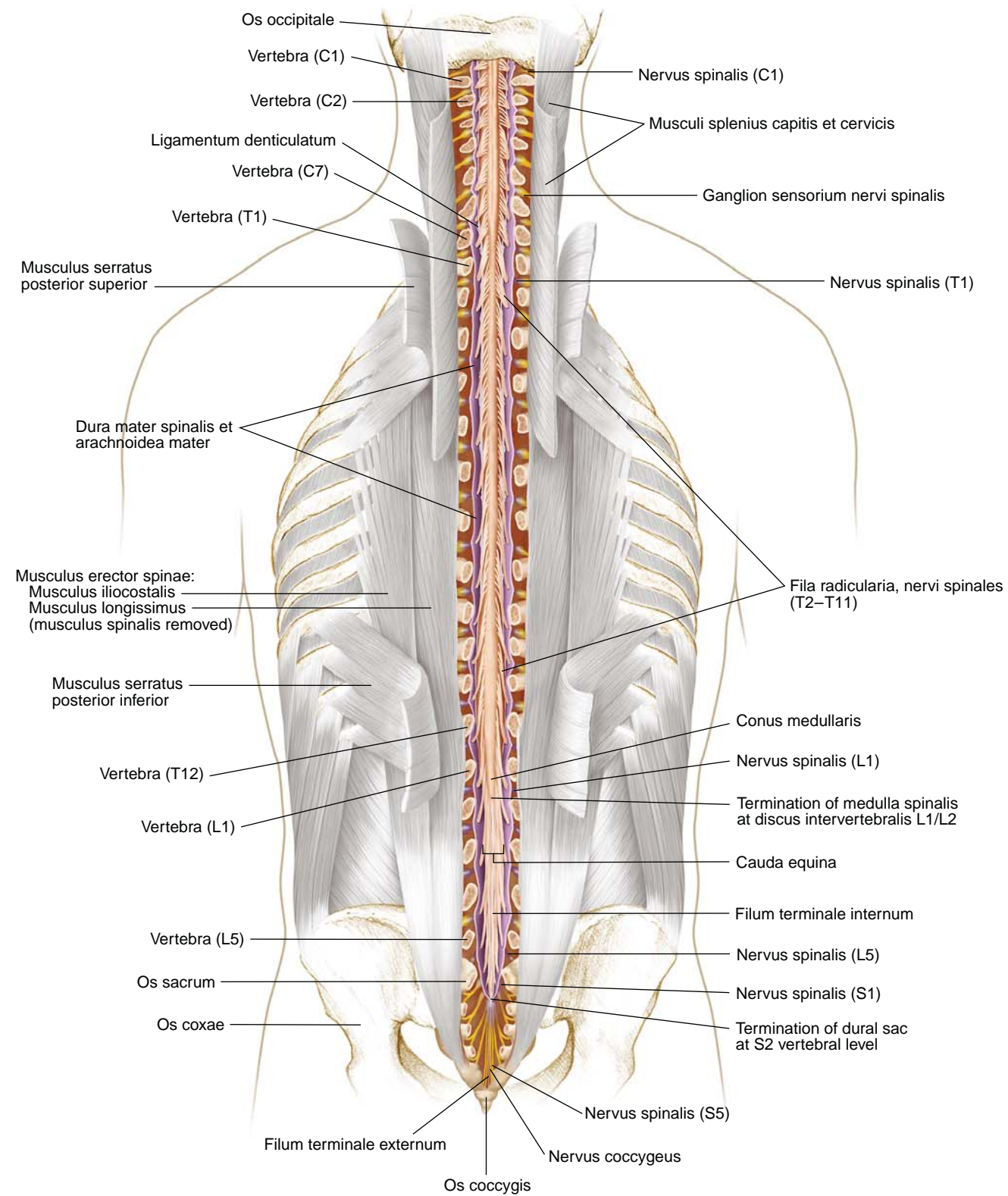


A. Orientation

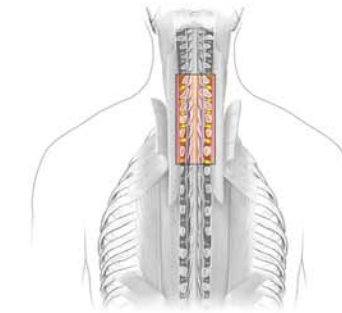


B. Oblique section

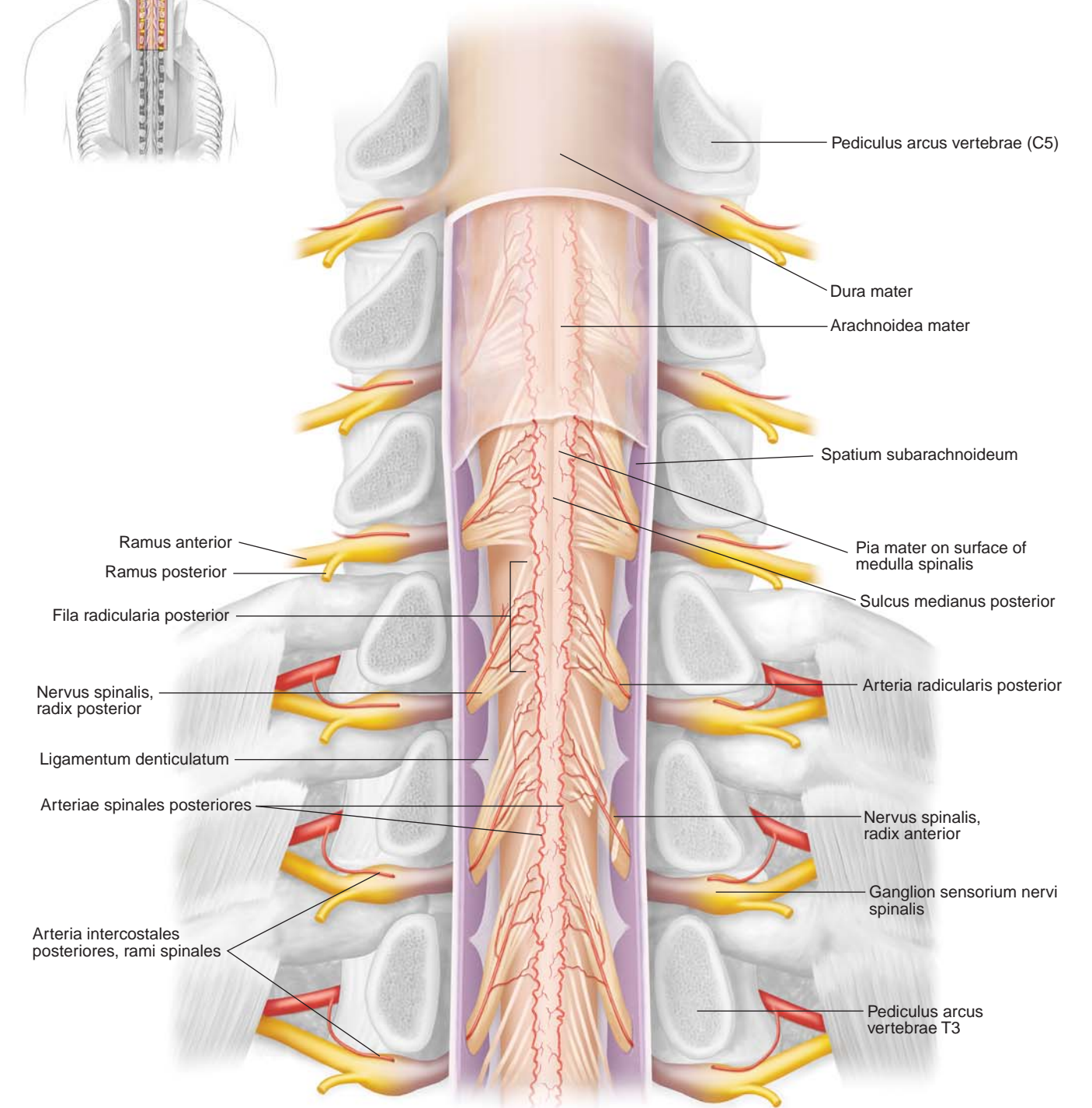




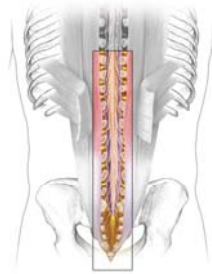
A. Orientation



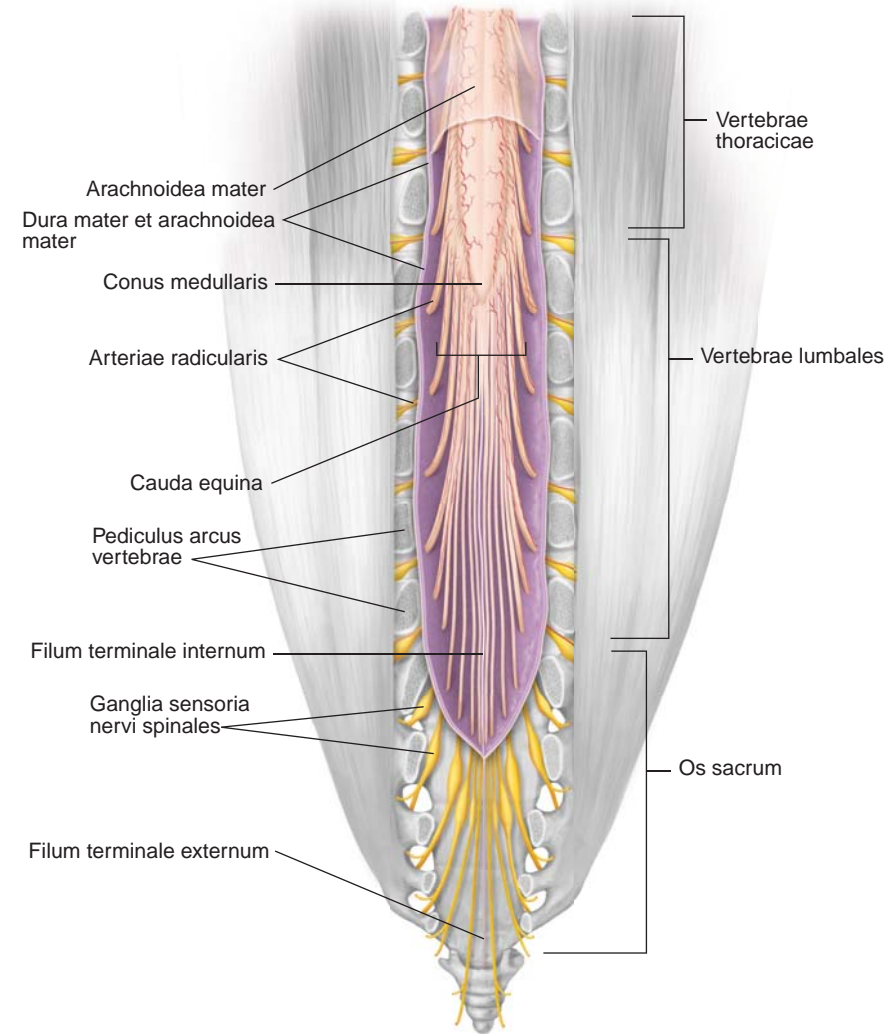
B. Dissection



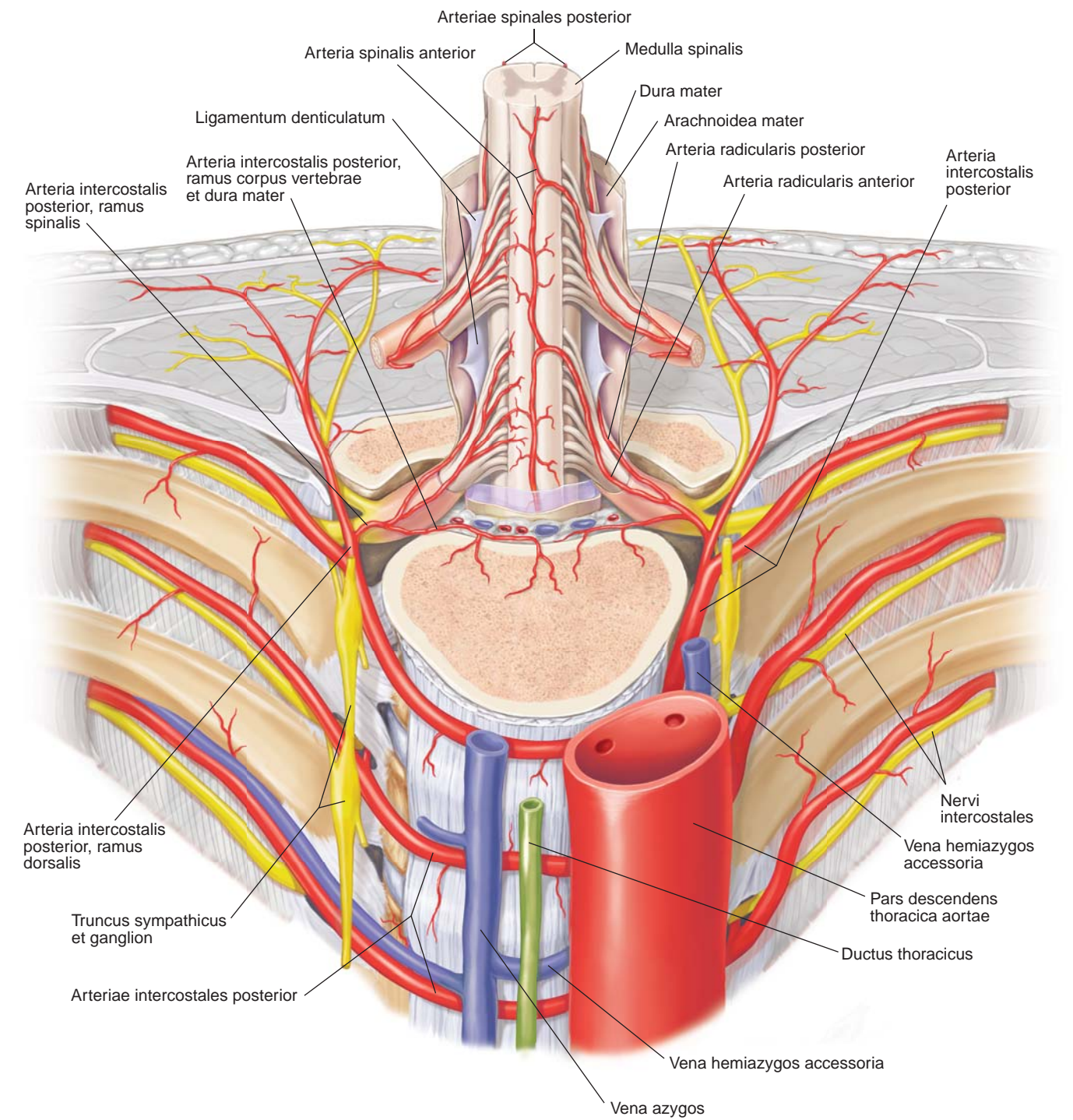
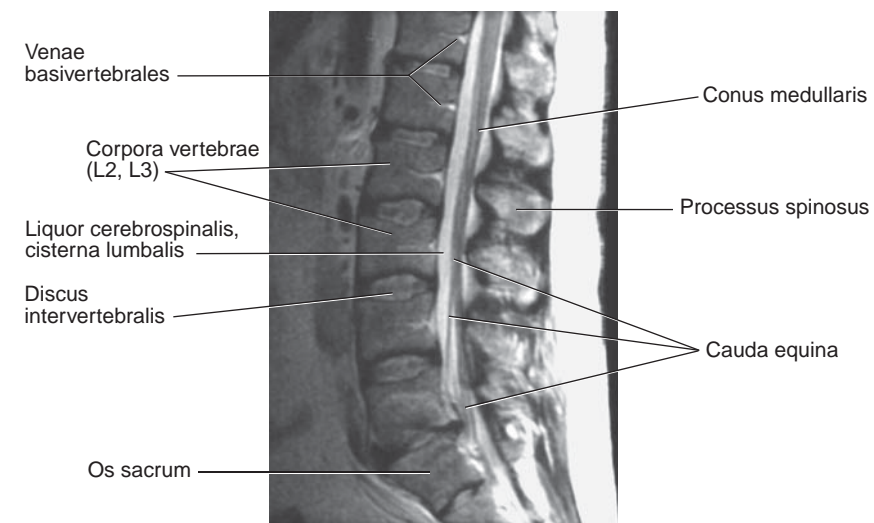
A. Orientation



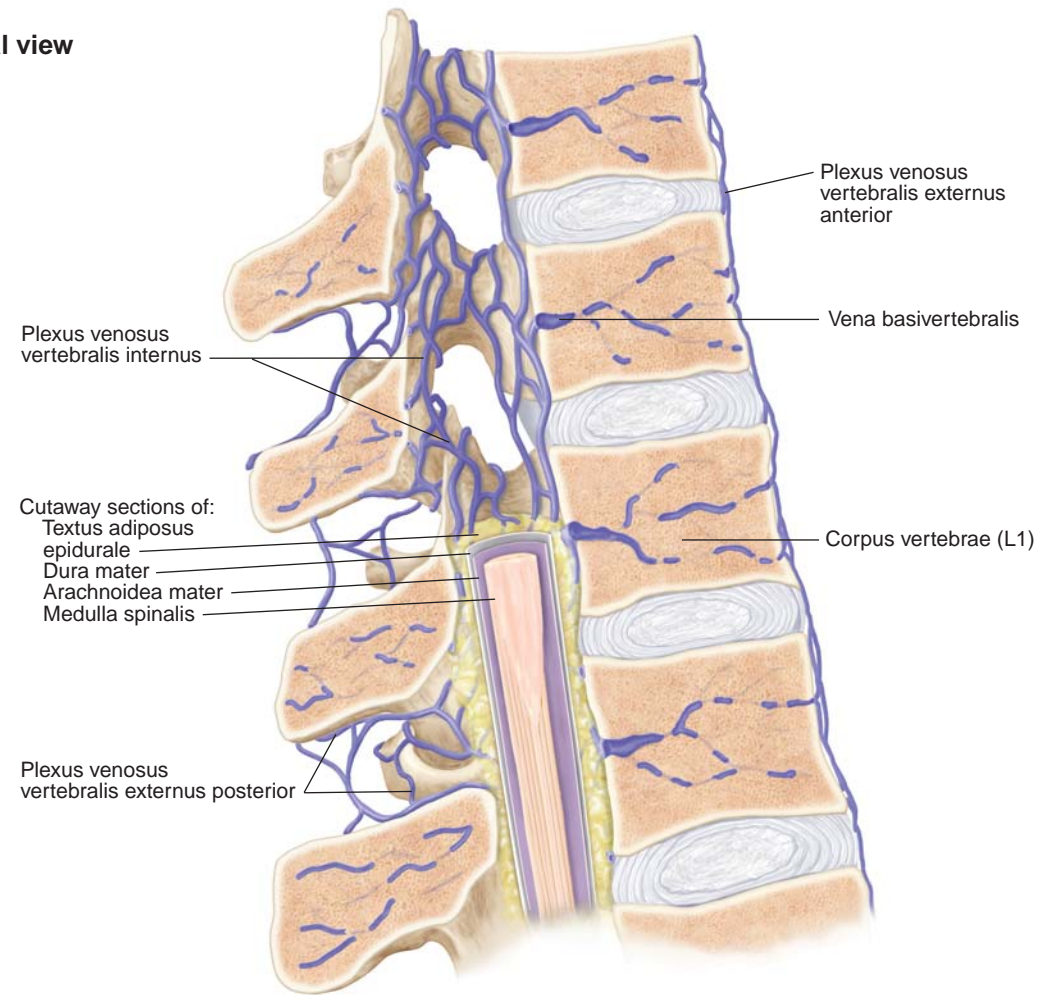
B. Dissection



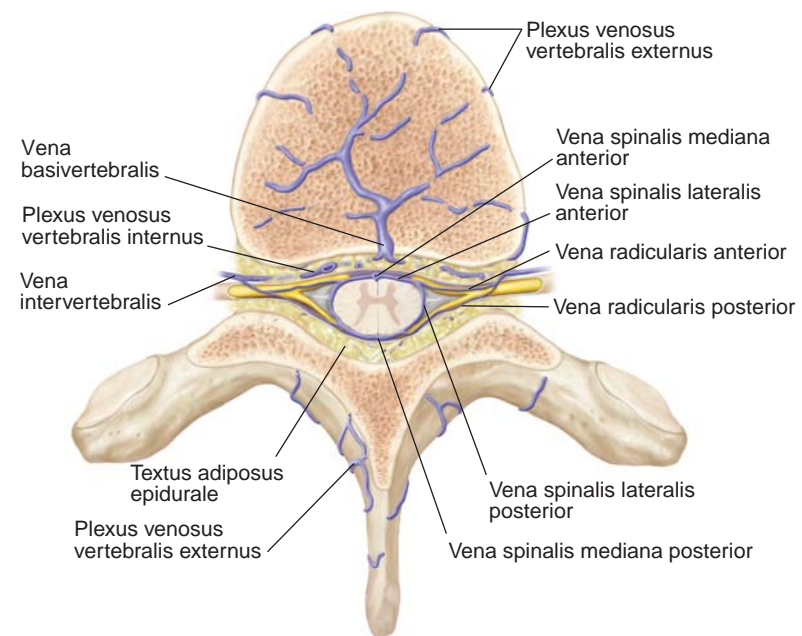
C. MRI (T2 weighted), sagittal view



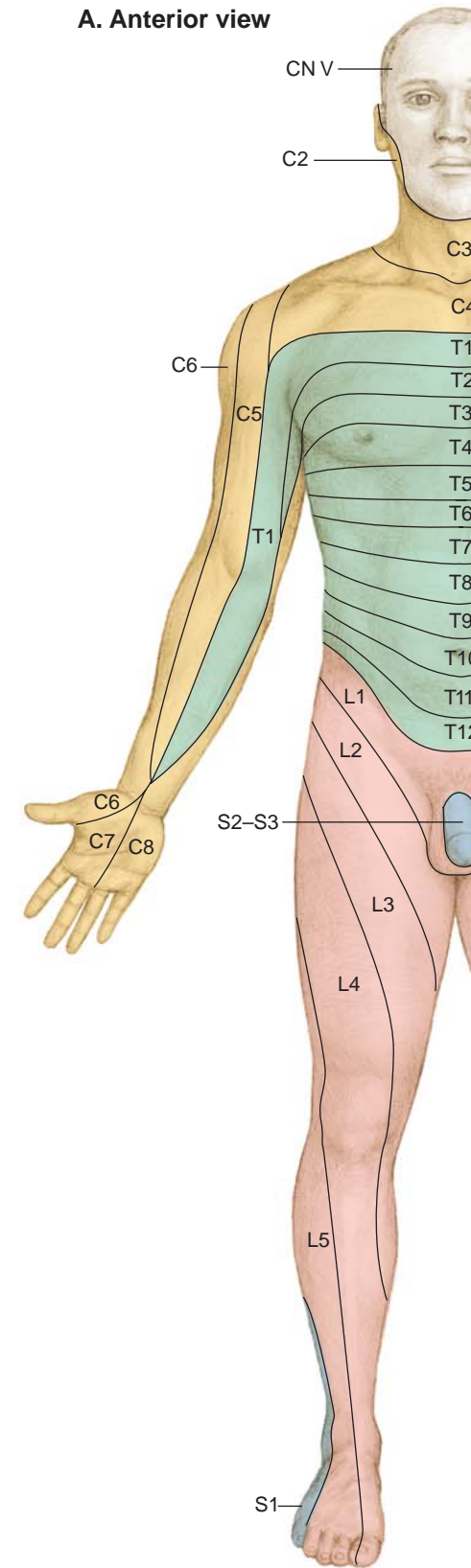
A. Sagittal view



B. Superior view



A. Anterior view



B. Posterior view

