

## Bamboo sliding door - Bamboo collection

design DMP Design



— Matt lacquered or wood veneered sliding door with channels on both sides and rail in polished chrome steel. Available in both the single leaf and double leaf models. It is available in all woods of the collection or matt lacquered in all RAL colours.

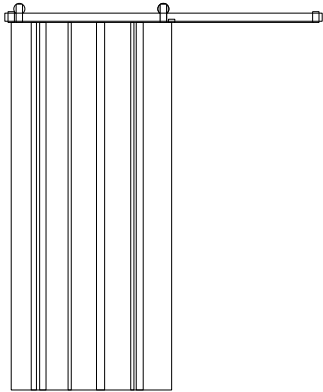
This sliding door is not only a functional object but rather a design element to reinterpret and decorate space, ideal for clients looking for innovative solutions. Bamboo Door, similarly to the wall panels, has a series of channels of different sizes that cut across the surface, each time creating different designs. The introduction of bars lacquered in a variety of colours makes it possible to create an endless number of combinations.



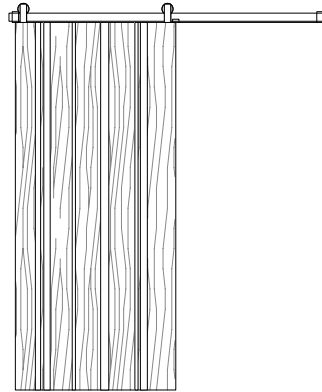
— Porta scorrevole laccata opaco o impiallacciata in legno con canali su entrambi i lati e binario di scorrimento in acciaio cromato lucido. Disponibile nella versione porta singola o doppia. La porta Bamboo può essere realizzata in tutti i legni lisci della collezione o laccata opaco in tutti i colori RAL.

Questa porta scorrevole non è solo un oggetto funzionale, ma piuttosto un elemento di design per reinventare e decorare lo spazio, ideale per clienti alla ricerca di soluzioni innovative. La porta Bamboo, in modo simile alla boiserie, è caratterizzata da una serie di canali di diversa dimensione che attraversano la superficie creando un design sempre diverso. L'uso di barre laccate in diversi colori consente così di realizzare un numero infinito di combinazioni cromatiche.

\_range

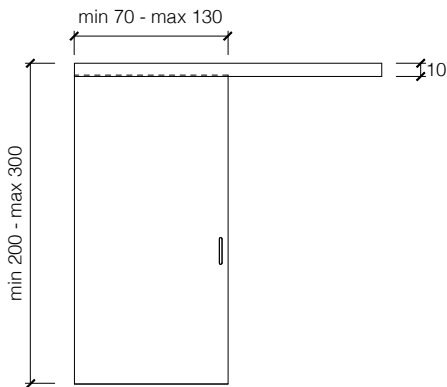


DP 310 A sliding door - porta scorrevole  
porte coulissante - Schiebetür - раздвижная дверь

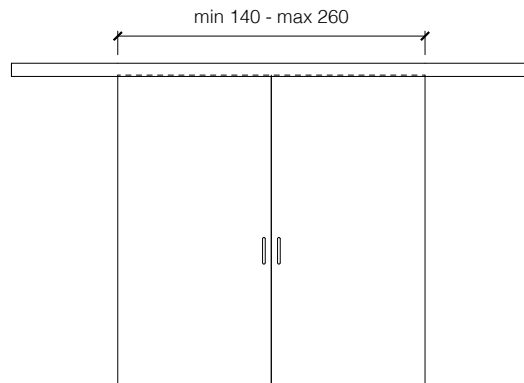


DP 311 L sliding door - porta scorrevole  
porte coulissante - Schiebetür - раздвижная дверь

\_dimensional limits



single sliding door



symmetrical double sliding door

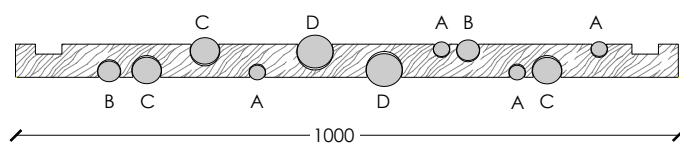
**Dimensions in centimeters.**

The right to discontinue and make changes is reserved.

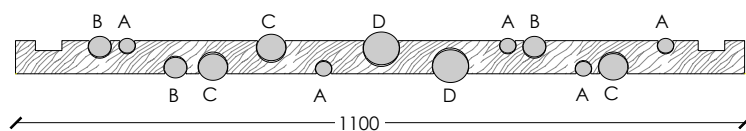
This information is based on the latest product information available at the time of printing.

\_dimensions

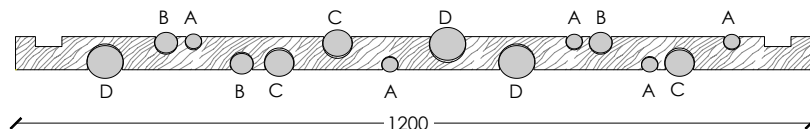
door L. 1000



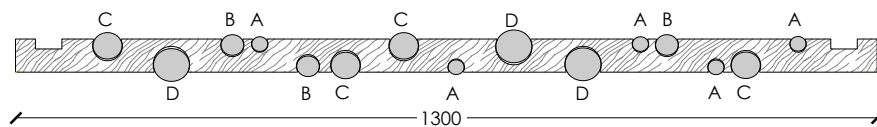
door L. 1100



door L. 1200



door L. 1300



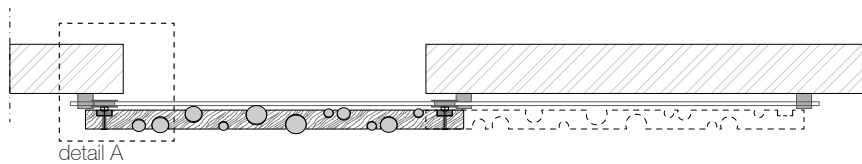
Dimensions in millimeters.

The right to discontinue and make changes is reserved.

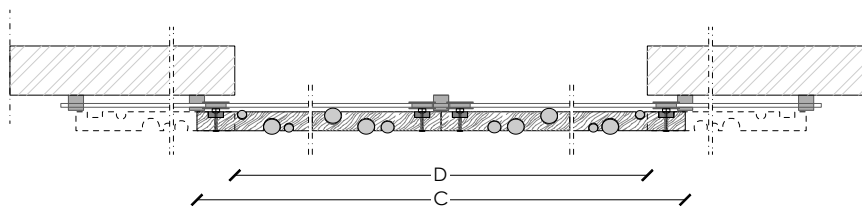
This information is based on the latest product information available at the time of printing.

\_dimensions

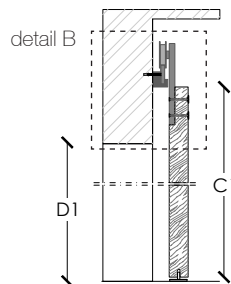
single sliding door



double sliding door



vertical section



legend

C = door                      D + 100 mm min  
D = door way

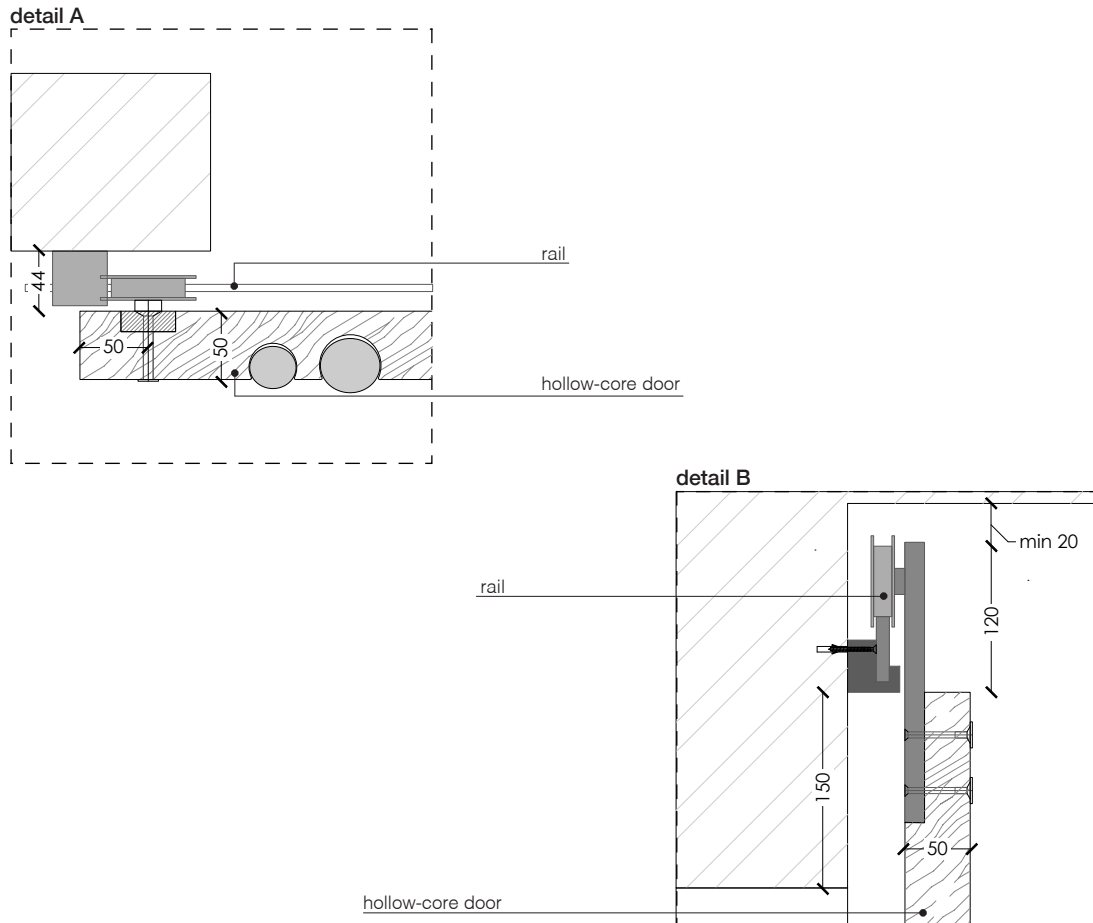
C = door                      D + 150 mm min  
D = door way

\_Dimensions in millimeters.

The right to discontinue and make changes is reserved.

This information is based on the latest product information available at the time of printing.

\_details



Dimensions in millimeters.

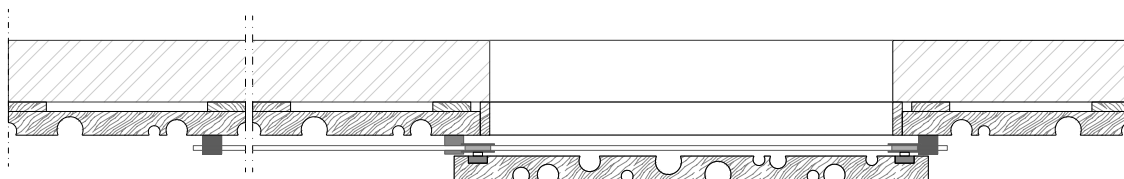
The right to discontinue and make changes is reserved.

This information is based on the latest product information available at the time of printing.

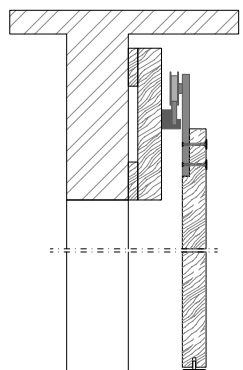
\_special case

sliding door with wall panels

single sliding door



vertical section



\_Dimensions in millimeters.

The right to discontinue and make changes is reserved.

This information is based on the latest product information available at the time of printing.

\_materials & finishes

plain woods



Maple



Oak



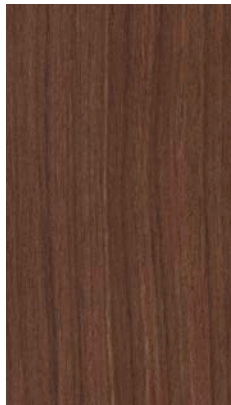
Teak



Zebrano



Canaletto Walnut



Dyed Canaletto walnut



Ebony



Termocotto Oak



Rosewood

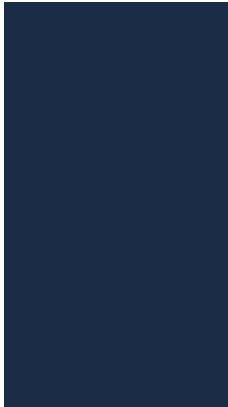


Wenge

\_The finishes shown are indicative and refer to the entire production range.  
Laurameroni reserves the right to modify the range without warning.

\_materials & finishes

matt lacquered



Matt lacquered



Available in all  
RAL / NCS colors

\_The finishes shown are indicative and refer to the entire production range.  
Laurameroni reserves the right to modify the range without warning.



\_handles



Recessed satin steel handle



Recessed satin steel handle with lock

\_maintenance

**\_ WOOD**

**Wood is a high-quality natural product. To maintain the natural character of wood and to protect surfaces from mechanical and chemical wear, veneered surfaces are coated with a high quality transparent paint. For cleaning and care, do not use acids or alkali-based cleaners, agents with bleaching additive, scouring powder, steel wool, pot scourers or similar. Anything hot or damp will cause damage to the surface. Remove soiling and liquids immediately. Use a dry soft cloth for cleaning, eventually add a little neutral cleaning agent to the water. The cloth must be only slightly damp, to prevent discolouration or swelling of the surface. It is then essential to rub the surfaces dry, so that there is no residual moisture.**

Il legno è un prodotto naturale di alta qualità. Per mantenere il carattere naturale del legno e proteggere le superfici dall'usura meccanica e chimica, le superfici impiallacciate sono rivestite con una vernice trasparente di alta qualità. Per la pulizia e la cura, non usare detergenti acidi o alcalini, agenti con additivi sbiancanti, polveri abrasive, lana d'acciaio, spugne o simili. Qualsiasi cosa calda o umida causerà danni alla superficie. Rimuovere immediatamente sporco e liquidi. Utilizzare un panno morbido e asciutto per la pulizia, eventualmente aggiungere un po' di detergente neutro nell'acqua. Il panno deve essere solo leggermente umido, per evitare scolorimenti o rigonfiamenti della superficie. È quindi essenziale strofinare gentilmente le superfici asciutte, in modo che non ci sia umidità residua.

\_maintenance

**LACQUERED WOODS**

Do not use acid or alkali-based cleaners. Do not use scouring agents, steel wool, pot cleaners or similar. Do not use solvents to clean painted surfaces. Pointed or sharp objects, such as blades or knives, can damage (scratch) the surface. Anything hot or damp will cause damage to the surface. Clean painted surfaces with a clean, soft, lint-free cloth to avoid abrasion with particles of dirt. For soft-finish paint surfaces, use a soft, lint-free, slightly damp cloth. If heavily soiled, paint surfaces can be cleaned more easily with a neutral (silicone-free) cleaning agent. Do not use furniture polish or other care products to clean soft-finish paint surfaces. It is then essential to rub the surface dry, so that there is no residual moisture. Clean painted surfaces regularly with a soft, lint-free cloth to remove dust.

Non utilizzare detergenti acidi o alcali. Non usare agenti abrasivi, lana d'acciaio, detergenti per pentole o simili. Non usare solventi per pulire le superfici verniciate. Oggetti appuntiti o taglienti, come lame o coltelli, possono danneggiare (graffiare) la superficie. Qualsiasi cosa calda o umida causerà danni alla superficie. Pulire le superfici verniciate con un panno pulito, morbido e privo di lanugine per evitare l'abrasione con particelle di sporco. Per superfici di vernice con finitura morbida, utilizzare un panno morbido, privo di lanugine e leggermente umido. Se molto sporchi, le superfici verniciate possono essere pulite più facilmente con un detergente neutro (privo di silicone). Non utilizzare lucidi per mobili o altri prodotti per la cura per pulire le superfici di vernice. È quindi essenziale strofinare delicatamente la superficie asciutta, in modo che non vi sia umidità residua. Pulire regolarmente le superfici verniciate con un panno morbido e privo di lanugine per rimuovere la polvere.

**BEDIF  
FEREN  
TBEUN  
IQUE.**

LAURAMERONI s.r.l.  
22040 Alzate Brianza (Como)  
Via Manzoni, 2784  
T +39 031 761450  
info@laurameroni.com  
www.laurameroni.com