

Remote Control Basics

Logitech Joystick Controller Installation

Description

The USB Logitech Controller allows you to remotely control the movements of your NXT. Use this guide to ensure that your hardware is properly installed on your computer.

Materials Needed

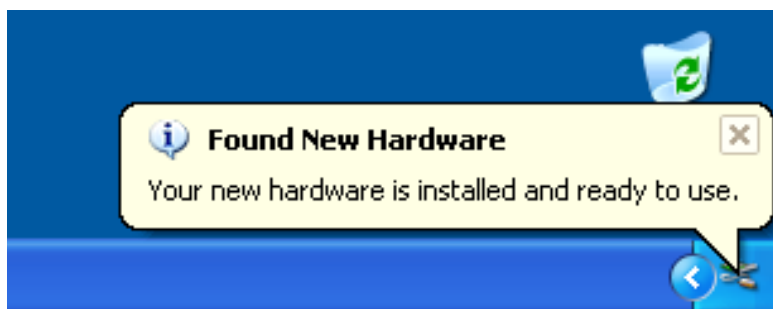
- 1 Logitech USB Controller (available at <http://store.robomatter.com/>)
- 1 PC (Windows XP SP2+ or Windows Vista recommended)
- 1 Available USB Port

Logitech USB Controller Installation

Plug the Logitech USB Controller into an available USB port.



Plug in the Logitech Controller
Plug the Logitech controller into an open USB port on your computer.



Windows Installation

Windows will automatically install the Logitech controller. This process may take a few minutes.

Notes:

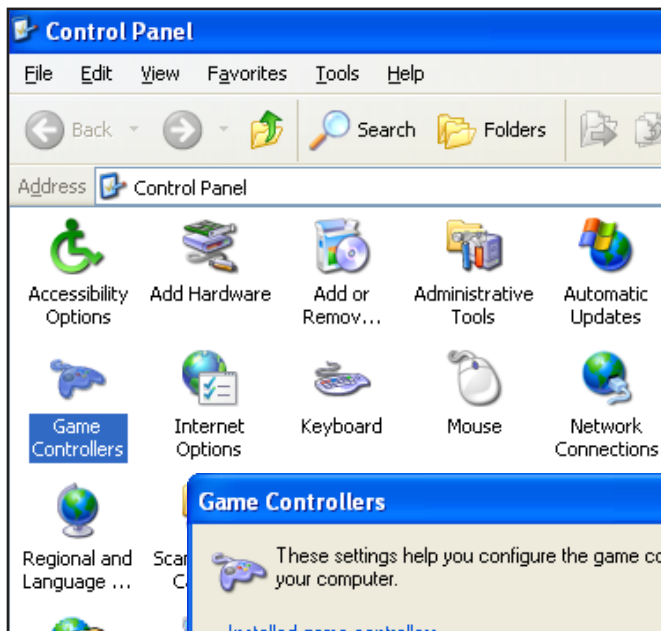
- Use ONLY the Logitech USB controllers! Other USB controllers are not supported and may not function properly.

Remote Control Basics

Logitech Joystick Controller Installation (cont.)

Logitech USB Controller Check (Optional)

To check that your USB controller is functioning properly, navigate to your *Control Panel* and double-click on *Game Controllers* to open the *Game Controllers* window.



Game Controllers
Go to Control Panel > Game Controllers, and open it.



Select the Controller
Click on the controller you want to check to select it. Each controller plugged into your computer should be listed.

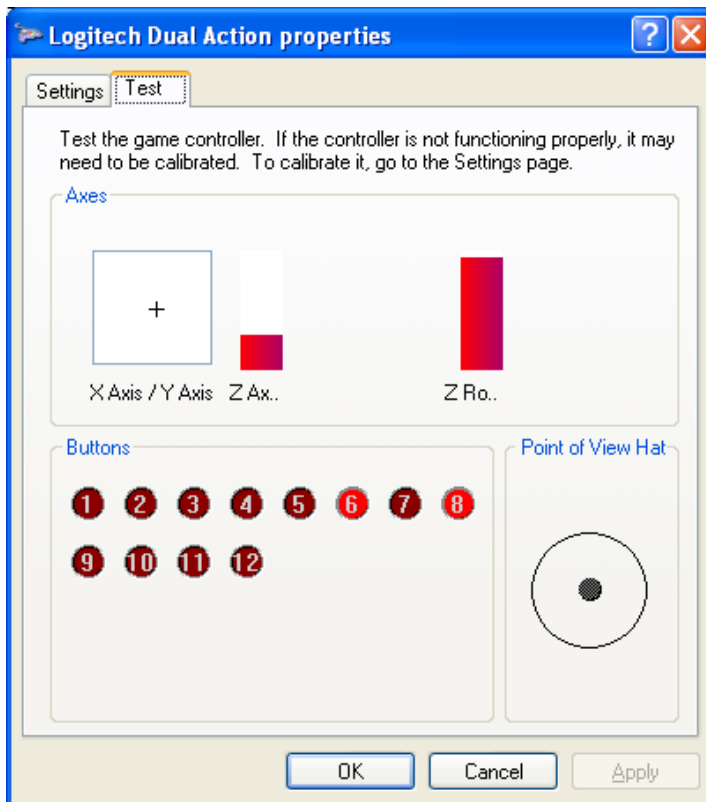
Select Properties
Click on the Properties button.

Remote Control Basics

Logitech Joystick Controller Installation (cont.)

Logitech USB Controller Check (Optional)

When the Properties window for your controller opens, check that the *Test* tab is open and move both joysticks and press each button. The corresponding on-screen indicators should update to match your controller.

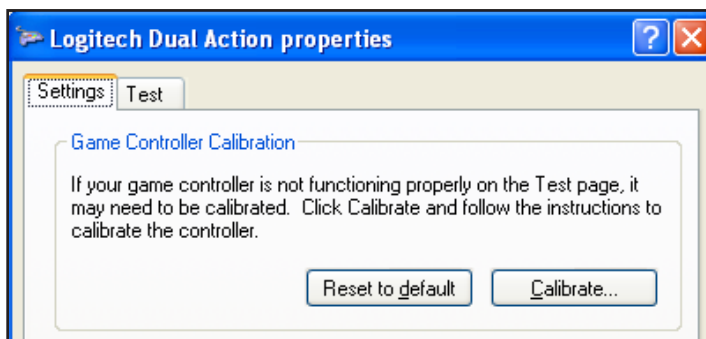


Select the Test tab

Click on the Test tab to select it.

Check each of the Controller Inputs

Pressing a button or moving a joystick should cause the on-screen indicators to update.



Configure the Controller Inputs

If the controller not functioning properly, it's settings can be Reset to default or Calibrated on the Settings tab.

Notes:

- If the Logitech USB controller does not respond at all, try restarting your computer. If it still fails, make sure that your computer is up-to-date, and running either Windows XP or Windows Vista.